



PARK RIDGE SOUTH SUBURB PROFILE

CONTENTS

INTRODUCTION 01

POPULATION..... 02

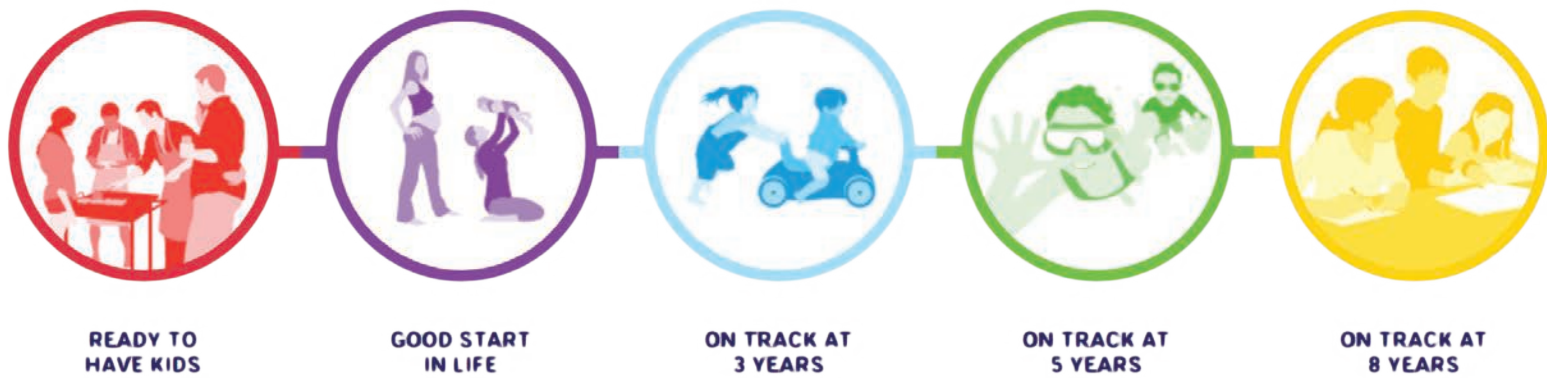
CULTURAL BACKGROUND..... 07

EDUCATION 07


EMPLOYMENT & HOUSEHOLD INFORMATION..... 08

TRANSPORT..... 10

THE LOGAN TOGETHER ROADMAP



FAMILY FOUNDATIONS



Priority

- Add to employment
- Increase housing
- Fund projects
- Invest resources and money into the family
- Provide services and support for families

STRONG COMMUNITY



Priority

- Build connections
- Address needs community

EFFECTIVE SYSTEMS



Priority

- Coordinate with others
- Create development solutions strategies
- Increase service effectiveness

POPULATION

TABLE 1: POPULATION OF THE PARK RIDGE SOUTH COMMUNITY BY AGE IN 2016

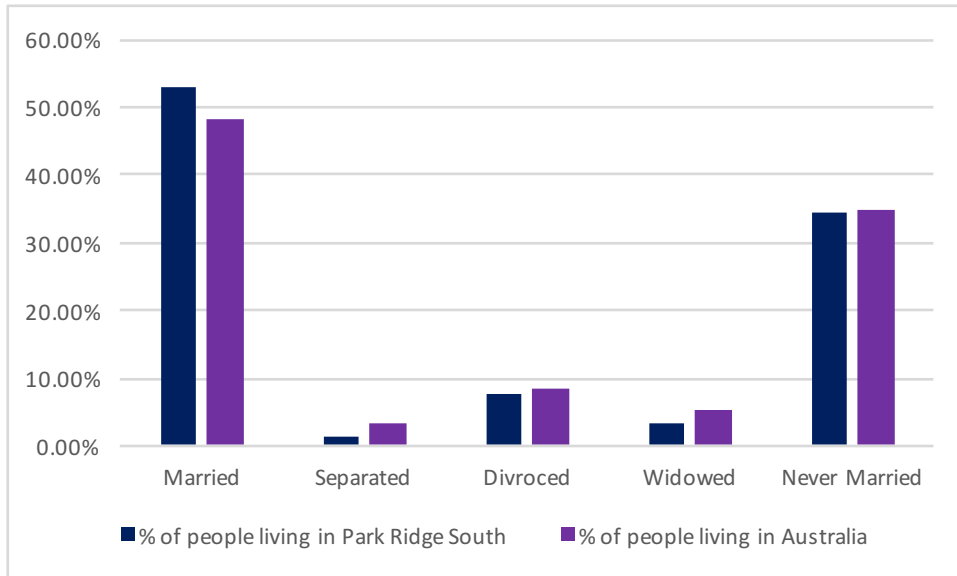
AGE	NO. OF PEOPLE IN PARK RIDGE SOUTH	% OF PEOPLE IN PARK RIDGE SOUTH	AUSTRALIA %
0-4 years	84	4.8	6.3
5-9 years	105	6	6.4
10-14 years	110	6.2	6.0
15-19 years	139	7.9	6.1
20-24 years	147	8.3	6.7
25-29 years	96	5.4	7.1
30-34 years	87	4.9	7.3
35-39 years	90	5.1	6.7
40-44 years	102	5.8	6.8
45-49 years	155	8.8	6.8
50-54 years	139	7.9	6.5
55-59 years	143	8.1	6.2
60-64 years	127	7.2	5.6
65-69 years	99	5.6	5.1
70-74 years	67	3.8	3.8
75-79 years	31	1.8	2.8
80-84 years	15	0.8	2.0
85 years and over	23	1.3	2.1

Source: ABS census data 2016

TABLE 2: BREAKDOWN BY AGE OF CHILDREN 0-8 YEARS IN PARK RIDGE SOUTH 2016

AGE	NO OF PEOPLE IN PARK RIDGE SOUTH	% PARK RIDGE SOUTH	% AUSTRALIA
0	22	1.2	1.2
1	14	0.8	1.3
2	21	1.2	1.3
3	13	0.7	1.3
4	17	1	1.3
5	12	0.7	1.3
6	11	0.6	1.3
7	21	1.2	1.3
8	21	1.2	1.3

FIGURE I: REGISTERED MARITAL STATUS OF PEOPLE AGED 15 YEARS AND OVER IN PARK RIDGE SOUTH



Source: ABS Census 2016 (people aged 15 and over)



TABLE 3: FAMILY COMPOSITION OF PEOPLE LIVING IN PARK RIDGE SOUTH

	FAMILIES IN PARK RIDGE SOUTH	PERSONS IN PARK RIDGE SOUTH
Couple family with no children	186	381
Couple family with:		
Children under 15 and:		
dependent students and non-dependent children	6	55
dependent students and no non-dependent children	22	117
no dependent students and with non-dependent children	23	97
no dependent students and no non-dependent children	83	343
Total:	142	615
No children under 15 and		
with dependent students and non-dependent children	14	56
with dependent students and no non-dependent children	23	69
no dependent students and with non-dependent children	81	268
Total	113	391
One parent family with:		
Children under 15 and:		
dependent students and non-dependent children	0	7
dependent students and no non-dependent children	0	5
no dependent students and with non-dependent children	0	8
no dependent students and no non-dependent children	15	47
Total	18	63
No children under 15 and:		
with dependent students and non-dependent children	6	16
with dependent students and no non-dependent children	5	16
no dependent students and with non-dependent children	20	44
Total	32	79
Other family	3	12
Total	489	1,533

Source: ABS Census 2016

Please note small random adjustments are made to cell values to protect the confidentiality of data. This may cause the sum of rows or columns to differ by small amounts from table totals.

CULTURAL BACKGROUND

FIGURE 2: ANCESTRY OF PEOPLE LIVING IN PARK RIDGE SOUTH (TOP 5 COUNTRIES OF BIRTH OF PARENTS)

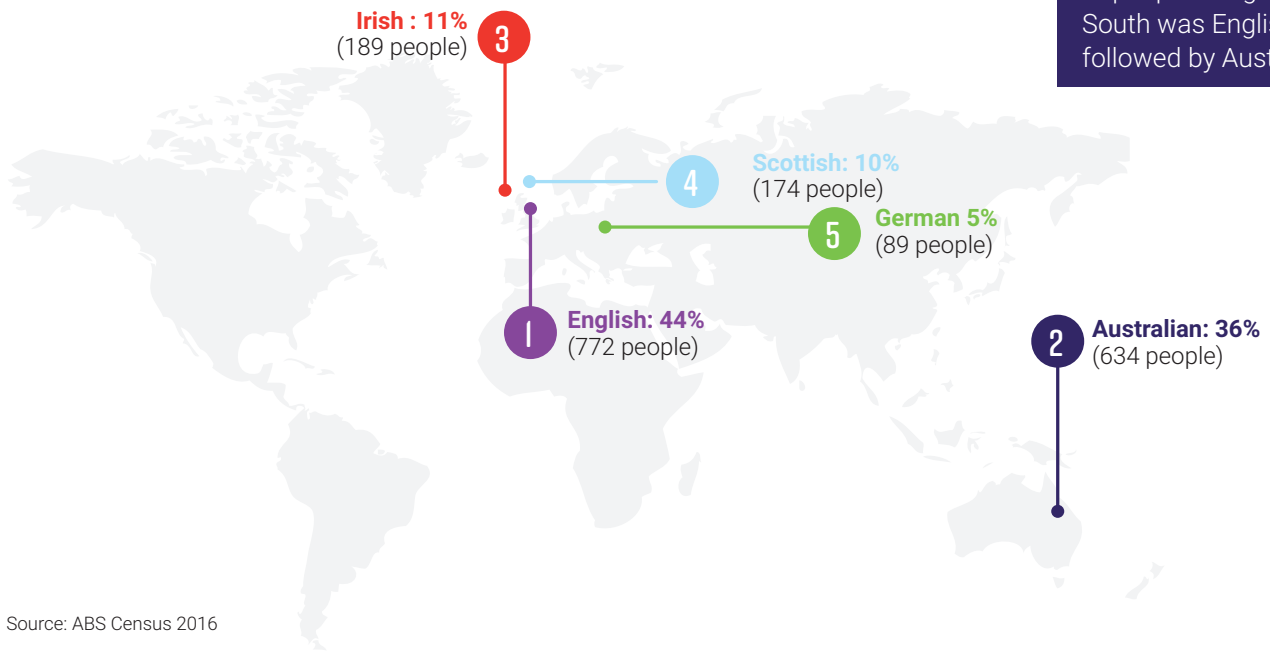


FIGURE 3: COUNTRY OF BIRTH OF PEOPLE LIVING IN PARK RIDGE SOUTH

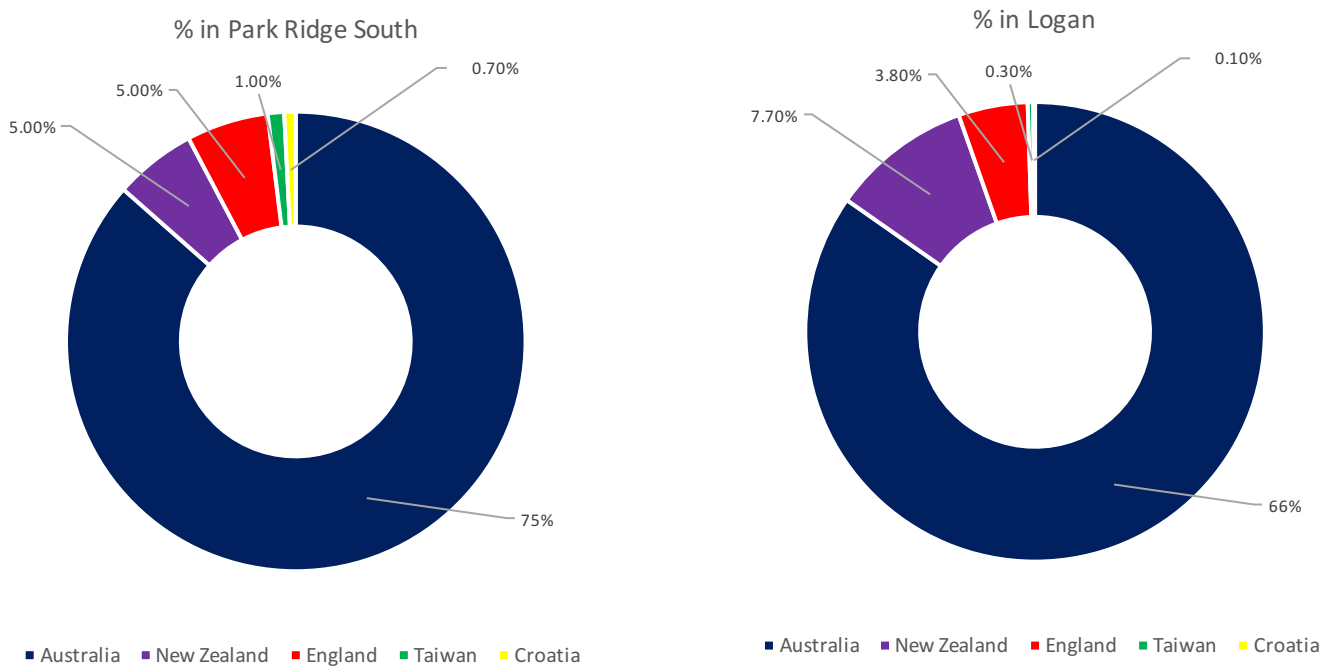


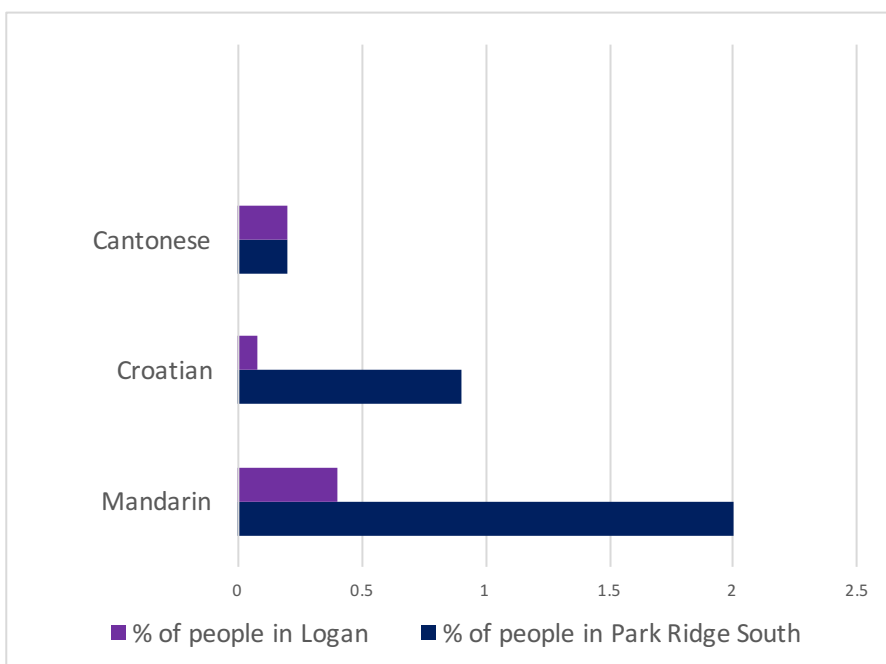
TABLE 4: ABORIGINAL AND/OR TORRES STRAIT ISLANDER PEOPLE

AGE	MALES	FEMALES	TOTAL
0-4 years	0	0	0
5-9 years	3	0	5
10-14 years	3	0	9
15-19 years	0	6	4
20-24 years	0	0	4
25-29 years	4	0	5
30-34 years	0	3	7
35-39 years	0	0	0
40-44 years	0	0	0
45-49 years	0	0	5
50-54 years	3	0	3
55-59 years	0	0	0
60-64 years	0	0	0
65 years and over	0	0	0
Total	19	23	38

Source: ABS Census 2016

Please note small random adjustments are made to cell values to protect the confidentiality of data. This may cause the sum of rows or columns to differ by small amounts from table totals.

FIGURE 4: LANGUAGE OTHER THAN ENGLISH SPOKEN AT HOME (TOP THREE RESPONSES)



1,489 people (85%) of people in Park Ridge South speak only English in the home, compared to 78% in Logan as a whole.

Source: ABS Census 2016

Please note small random adjustments are made to cell values to protect the confidentiality of data. This may cause the sum of rows or columns to differ by small amounts from table totals.

EDUCATION

TABLE 5: NUMBER OF PEOPLE LIVING IN PARK RIDGE SOUTH ATTENDING AN EDUCATIONAL INSTITUTION

EDUCATION TYPE	PARK RIDGE SOUTH #	PARK RIDGE SOUTH %	AUSTRALIA %
Preschool	16	0.9	4.8
Primary School - Govt.	101	5.7	18.2
Primary School - Catholic	18	1	5.3
Primary School - other non Govt.	27	1.5	3.2
Secondary School -Govt.	72	4	11.5
Secondary School - Catholic	25	1.4	4.7
Secondary School - other non Govt.	30	1.7	3.9
Technical or Further Education	29	1.6	5.9
University or tertiary institution	61	3.5	16.1
Other	9	0.5	2.8
Not stated	70	3.9	23.7

Source: ABS Census 2016

TABLE 6: LEVEL OF EDUCATION OF PEOPLE LIVING IN PARK RIDGE SOUTH

Number of people 15 years and over: 1,468

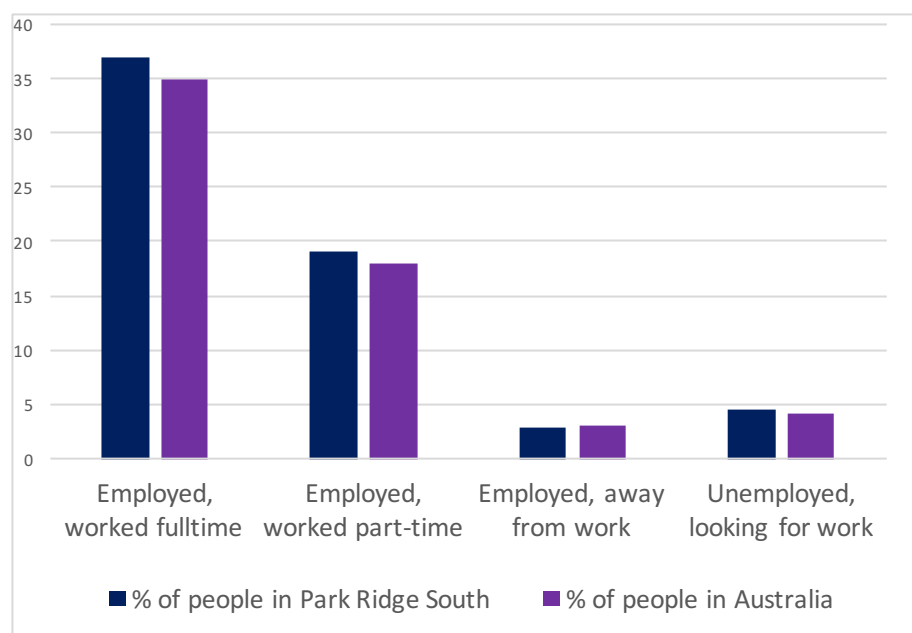
	NO. OF PEOPLE IN PARK RIDGE SOUTH	% OF PEOPLE IN PARK RIDGE SOUTH	% OF PEOPLE IN AUSTRALIA
Postgraduate Degree	0	0	.07
Doctoral Degree	3	0.2	0.61
Master Degree	14	0.9	3.1
Grad Dip and Grad Cert	3	0.2	0.14
Grad Dip	11	0.7	1.11
Grad Cert	0	0	0.3
Bachelor Degree	80	5.5	11.6
Adv Dip and Dip	0	0	.05
Adv Dip/Associate Degree	16	1	2.4
Diploma	47	3.2	3.7
Cert III and IV	244	16	11.2
Cert I and II	9	0.6	0.7
Cert	15	1	1.1
Level of education inadequately described	7	0.5	0.4
Level of education not stated	11	0.7	1.1
Total	454	31	38

Source: ABS Census 2016

Please note small random adjustments are made to cell values to protect the confidentiality of data. This may cause the sum of rows or columns to differ by small amounts from table totals.

EMPLOYMENT AND HOUSEHOLD INFORMATION

FIGURE 5: SELECTED LABOUR FORCE STATISTICS (PEOPLE AGED 15 AND OVER)



Number of people aged 15 years and over in Park Ridge South: 1,486
 Number of people in the labour force: 930
 Number of people not in labour force: 486

TABLE 7: NO OF PERSONS EMPLOYED BY OCCUPATION (AGED 15 YEARS AND OVER)

	% OF PEOPLE IN PARK RIDGE SOUTH	% OF PEOPLE IN AUSTRALIA
Managers	6.4	7.3
Professionals	6.3	12.4
Technicians and trade workers	11	7.6
Community and personal service workers	5.2	6.0
Clerical and administrative workers	9.7	7.6
Sales workers	6.5	5.2
Machinery operators and drivers	7.4	3.5
Labourers	5.5	5.3
Inadequately described/not stated	0.8	0.9

Source: ABS Census 2016

Please note small random adjustments are made to cell values to protect the confidentiality of data. This may cause the sum of rows or columns to differ by small amounts from table totals.

FIGURE 6: TOTAL WEEKLY INCOME OF FAMILIES IN PARK RIDGE SOUTH

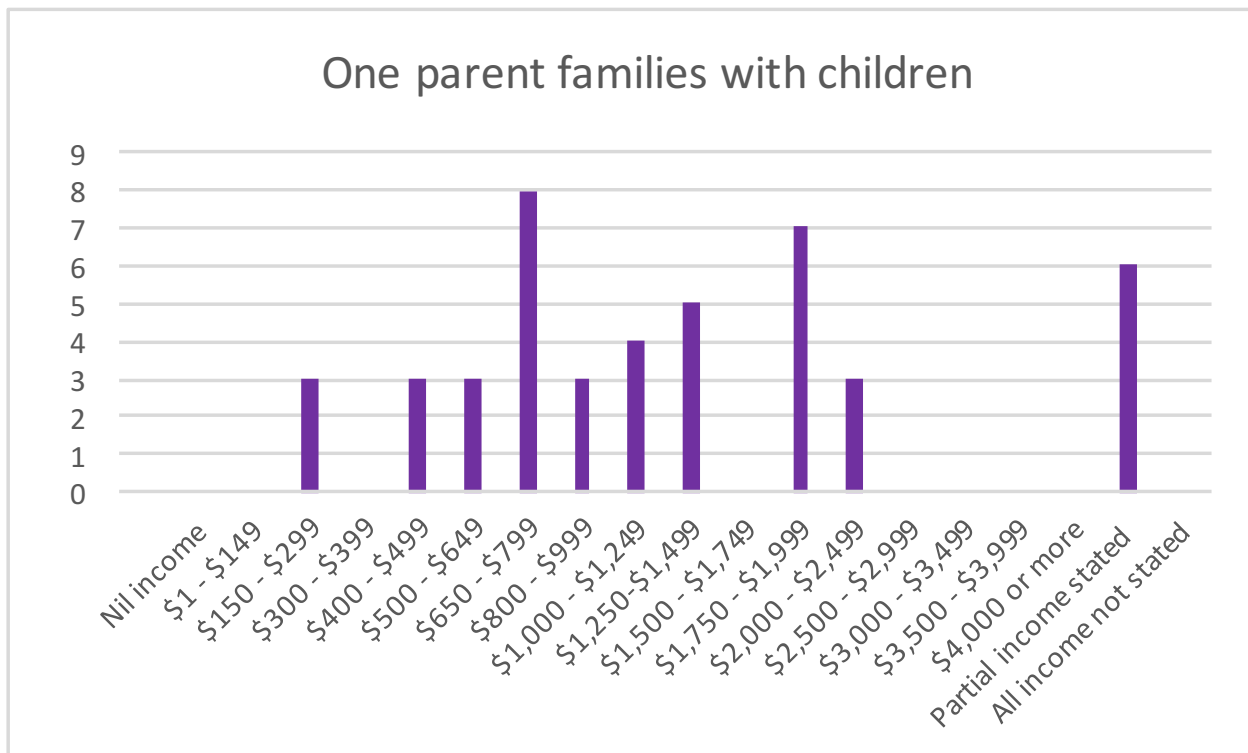
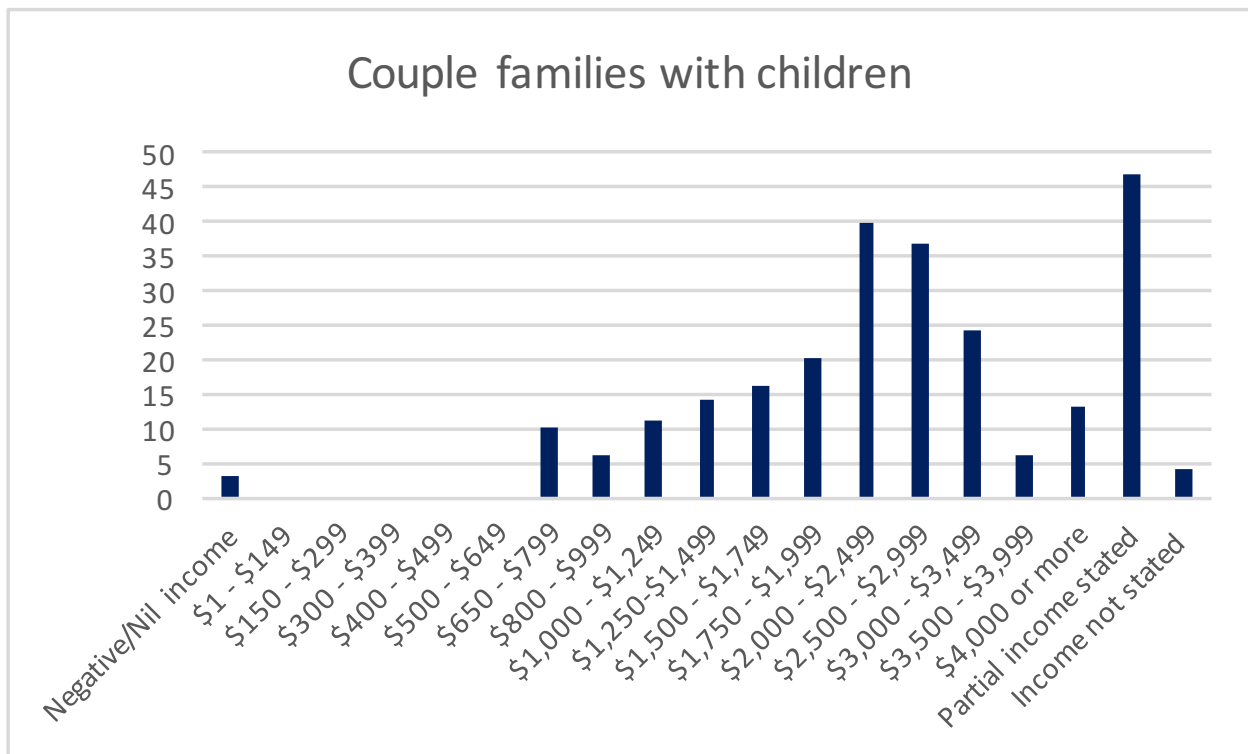


TABLE 8: HOUSEHOLD INCOME AND HOUSING COSTS - SELECTED MEDIANS AND AVERAGE

	PARK RIDGE SOUTH	LOGAN	AUSTRALIA
Median age of persons	41	34	38
Median total personal income (\$/weekly)	619	635	662
Median total family income (\$/weekly)	1,796	1,546	1,734
Median total household income (\$/weekly)	1,823	1,416	1,438
Median mortgage repayment (\$/monthly)	1,842	1,733	1,755
Median rent (\$/weekly)	440	335	335
Average number of persons per bedroom	0.8	0.8	0.9
Average household size	3.2	2.9	2.6

Source: ABS Census 2016

Please note small random adjustments are made to cell values to protect the confidentiality of data. This may cause the sum of rows or columns to differ by small amounts from table totals.

INTERNET CONNECTION

TABLE 9: DWELLING INTERNET CONNECTION

	% OF DWELLINGS IN PARK RIDGE SOUTH	% OF DWELLINGS IN LOGAN	% OF DWELLINGS IN AUSTRALIA
Internet accessed from dwelling	89	84.7	83.1
Internet not accessed from dwelling	7.7	12.6	14.1
Not stated	2	2.7	2.6

Source: ABS Census 2016

Please note small random adjustments are made to cell values to protect the confidentiality of data. This may cause the sum of rows or columns to differ by small amounts from table totals.



FIGURE 7: NUMBER OF MOTOR VEHICLES BY DWELLING

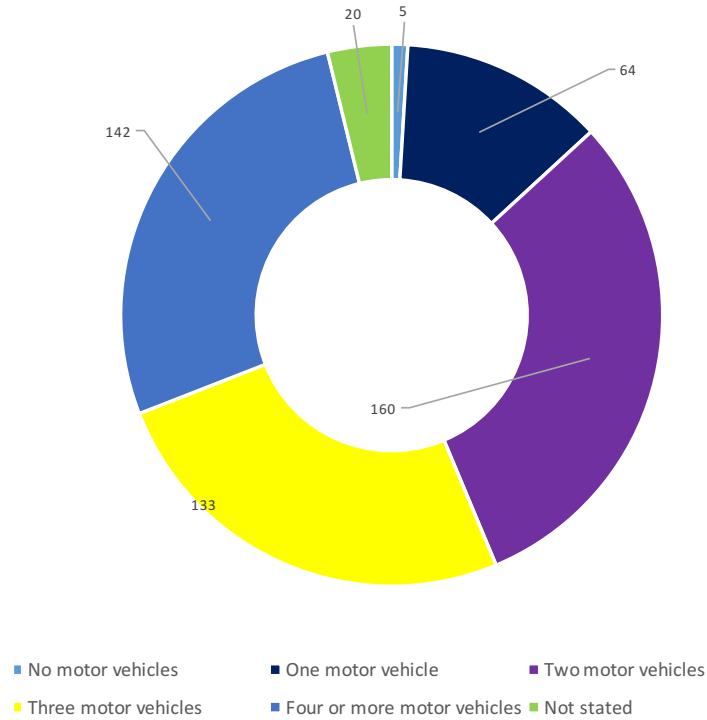


TABLE 10: PRIMARY SINGLE METHOD OF TRANSPORT TO WORK

	% IN PARK RIDGE SOUTH	% IN LOGAN	% IN AUSTRALIA
Train	0.4	1.3	5.6
Bus	1.4	3.3	3.7
Ferry	0	0	0.1
Tram (includes light rail)	0	0	0.7
Taxi	0	0.1	0.2
Car, as driver	85	83.1	74.8
Car, as passenger	4.8	6.8	5.7
Truck	6.5	1.9	1.0
Motorbike/scooter	1.8	1.1	0.7
Bicycle	0	0.3	1.2
Other	0	0.6	0.8
Walked only	0.4	1.3	4.3

Source: ABS Census 2016

Please note small random adjustments are made to cell values to protect the confidentiality of data. This may cause the sum of rows or columns to differ by small amounts from table totals.

FOR UP-TO-DATE CRIME INFORMATION ABOUT THIS AND OTHER LOGAN SUBURBS, GO TO
[HTTPS://DATA.POLICE.QLD.GOV.AU/CRIMESTATSMOBILE/#/MAP](https://data.police.qld.gov.au/crimestatsmobile/#/map)



 (07) 3382 1163

 info@logantogether.org.au

 facebook.com/LoganTogether

 [@LoganTogether](https://twitter.com/LoganTogether)

