

THE 2018 AEDC FIGURES HAVE ARRIVED!

The Australian Early Development Census (AEDC) results guide much the work of Logan Together - we want kids in Logan to be at the same level as kids across Queensland. We are guiding by the life stage approach seen on our Roadmap for Change, to ensure we are doing everything at each age and stage to get kids off to a great start. The AEDC domains show us where we need to focus and how Logan is doing.

As Logan Together kicked off in 2015, we are keeping a close eye on AEDC movements across the next seven years to guide where we focus our work and the change needs to happen most - both geographically and per domain. As projects develop across the city, the AEDC results is one of the tools which tell us what's working.

Here's some key insights into what they tell us:

At Logan, Queensland and Australia-wide levels there is a general trend towards small decreases in overall rates of vulnerability as measured by the vulnerable on one domain or more measure. But it is slow progress!

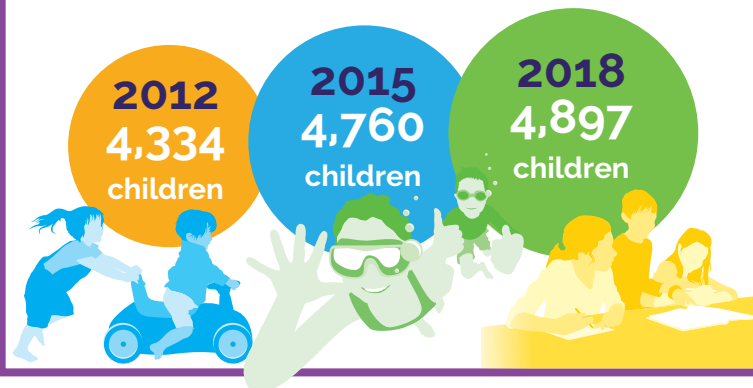
Since 2012 overall rates of vulnerability in Logan are decreasing slightly faster than across Queensland and Australia as a whole.

Progress is uneven - some domains are improving but some are fluctuating or going backwards from one collection to the next.

In Logan, things are generally heading in a positive direction with more suburbs showing long term improvement trends than the opposite and the overall numbers for the city getting slightly better over time.

NUMBER OF CHILDREN ASSESSED IN LOGAN

Logan is growing fast. That means that in each AEDC collection, there's more children participating.



A CLOSER LOOK AT THE 5 AEDC DOMAINS IN LOGAN

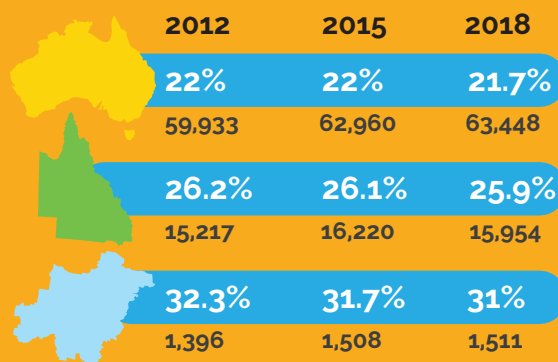
Since 2012 there have been small movements in rates of vulnerability (of less than 1%) in the Physical health and wellbeing, Social competence and Emotional maturity domains, but a more significant positive trend in the Language and cognitive skills and Communication and general knowledge domains.

| | 2012 | 2015 | 2018 |
|---|------|------|------|
| Physical health and wellbeing domain | 15.1 | 14.4 | 15.8 |
| Social competence domain | 14.2 | 14.4 | 14.6 |
| Emotional maturity domain | 11.4 | 12.4 | 12.4 |
| Language and cognitive skills (school-based) domain | 12.9 | 11.1 | 10.1 |
| Communication skills and general knowledge domain | 14.6 | 12.7 | 12.8 |

LOGAN VS QLD VS AUSTRALIA

While the changes are small and gradual, there is a decrease in rates of vulnerability at a Logan, Queensland and Australia-wide level.

Decreases in vulnerability in Logan are occurring slightly faster than in Queensland and Australia overall.



NUMBER OF SUBURBS WITH CHANGES IN LEVELS OF VULNERABILITY

Overall about 22% of suburbs in Logan have experienced decreases in vulnerability since 2012.

We need to be cautious in interpreting changes at a suburb level because the sample sizes are small and many different factors can influence the results but we would rather see this trend than the opposite.



SUBURBS EXPERIENCING A DECREASE IN RATES OF VULNERABILITY

Top 5 decreases in vulnerability

| | 2012 vs 2018 | | 2015 vs 2018 |
|---------------|--------------|------------|--------------|
| Buccan | -20.9 | Windaroo | -15.6 |
| Greenbank | -17.9 | New Beith | -13.7 |
| New Beith | -17.5 | Crestmead | -12.7 |
| Daisy Hill | -12.1 | Daisy Hill | -12.3 |
| Heritage Park | -12 | Springwood | -10.1 |

The Australian Early Development Census (AEDC) provides a national measurement to monitor Australian children's development across five domains: physical wellbeing, social wellbeing, emotional wellbeing, language, and communication. The AEDC provides evidence to support policy, planning and action for health, education and community support.

- Statically significant reduction
- Reduction, but not significant
- Change < 5%
- Increase, but not significant
- Statically significant increase

CHILDREN VULNERABLE ON ONE OR MORE DOMAINS

CRITICAL DIFFERENCE

| SUBURB | 2012 2015 2018 | | | 2012 | | 2015 | | 2018 | | 2015 VS 2018 (%) | 2012 VS 2018 (%) |
|----------------------------|---------------------|--------|--------|-------|--------|-------|--------|-------|--------|------------------|------------------|
| | # children assessed | | | % | # | % | # | % | # | | |
| Australia | | | | 22% | 59,933 | 22% | 62,960 | 21.7% | 63,448 | | |
| Qld | 57,994 | 62,027 | 61,673 | 26.2% | 15,217 | 26.1% | 16,220 | 25.9% | 15,954 | | |
| Logan* | 4,569 | 4,942 | 5,053 | 32.3% | 1,396 | 31.7% | 1,508 | 31% | 1,511 | | |
| Bahrs Scrub | 18 | 30 | 37 | 5.9 | 1 | 29.6 | 8 | 22.9 | 8 | -6.7 | 17.0 |
| Beenleigh | 110 | 116 | 101 | 29.2 | 28 | 33.3 | 36 | 24.2 | 22 | -9.1 | -5.0 |
| Berrinba | 21 | 24 | 35 | 25 | 5 | 34.8 | 8 | 32.3 | 10 | -2.5 | 7.3 |
| Bethania | 61 | 49 | 60 | 26.3 | 15 | 27.3 | 12 | 30.4 | 17 | 3.1 | 4.1 |
| Boronia Heights | 134 | 147 | 144 | 35.1 | 46 | 34.8 | 48 | 29 | 40 | -5.8 | -6.1 |
| Browns Plains | 104 | 100 | 104 | 36.7 | 36 | 30.4 | 28 | 35.7 | 35 | 5.3 | -1.0 |
| Buccan | 22 | | 35 | 40.9 | 9 | | | 20 | 7 | | -20.9 |
| Carbrook | | | 15 | | | | | | 5 | | |
| Cedar Grove # | 37 | 23 | 35 | 27.3 | 9 | 34.8 | 8 | 28.6 | 10 | -6.2 | 1.3 |
| Cedar Vale | 51 | 70 | 41 | 27.7 | 13 | 17.9 | 12 | 32.5 | 13 | 14.6 | 4.8 |
| Chambers Flat/Park Ridge | 45 | 40 | 44 | 33.3 | 14 | 35.9 | 14 | 29.3 | 12 | -6.6 | -4.0 |
| Cornubia | 90 | 98 | 84 | 29.6 | 24 | 19.6 | 18 | 25.9 | 21 | 6.3 | -3.7 |
| Crestmead | 271 | 271 | 272 | 35.6 | 90 | 46.3 | 120 | 33.6 | 86 | -12.7 | -2.0 |
| Daisy Hill | 103 | 112 | 101 | 30.9 | 29 | 31.1 | 33 | 18.8 | 18 | -12.3 | -12.1 |
| Eagleby | 230 | 233 | 210 | 36.7 | 76 | 36.9 | 80 | 43.7 | 86 | 6.8 | 7.0 |
| Edens Landing/Holmview | 139 | 140 | 138 | 26 | 34 | 32.3 | 42 | 30.9 | 42 | -1.4 | 4.9 |
| Forestdale | 30 | 35 | 26 | 13.8 | 4 | 14.3 | 5 | 23.1 | 6 | 8.8 | 9.3 |
| Greenbank | 111 | 109 | 100 | 45.7 | 48 | 25.5 | 26 | 27.8 | 27 | 2.3 | -17.9 |
| Heritage Park | 82 | 85 | 85 | 33.8 | 27 | 21.3 | 17 | 21.8 | 17 | 0.5 | -12.0 |
| Hillcrest | 80 | 92 | 97 | 29.9 | 23 | 28.7 | 25 | 29.3 | 27 | 0.6 | -0.6 |
| Jimboomba | 196 | 238 | 229 | 30.1 | 56 | 24.3 | 54 | 31.1 | 69 | 6.8 | 1.0 |
| Kingston | 202 | 220 | 199 | 36.8 | 70 | 35.5 | 75 | 46.8 | 88 | 11.3 | 10.0 |
| Logan Central | 87 | 114 | 124 | 44 | 33 | 41.8 | 46 | 35.8 | 44 | -6.0 | -8.2 |
| Logan Reserve | 33 | 49 | 93 | 33.3 | 9 | 25 | 11 | 26.7 | 24 | 1.7 | -6.6 |
| Logan Village / Stockleigh | 68 | 70 | 81 | 36.9 | 24 | 31.3 | 21 | 25 | 19 | -6.3 | -11.9 |
| Loganholme | 127 | 130 | 89 | 29.7 | 35 | 39.5 | 47 | 40.7 | 35 | 1.2 | 11.0 |
| Loganlea | 94 | 122 | 118 | 35.7 | 30 | 39 | 46 | 38.6 | 44 | -0.4 | 2.9 |
| Marsden | 237 | 291 | 316 | 39 | 87 | 36.7 | 101 | 38.9 | 116 | 2.2 | -0.1 |
| Meadowbrook | 51 | 47 | 47 | 36.7 | 18 | 23.9 | 11 | 33.3 | 15 | 9.4 | -3.4 |
| Mount Warren Park | 79 | 86 | 80 | 21.4 | 15 | 30.6 | 26 | 26.3 | 20 | -4.3 | 4.9 |
| Mundoolan | 28 | 30 | 29 | 30.8 | 8 | 17.9 | 5 | 25 | 7 | 7.1 | -5.8 |
| Munruben | 48 | 45 | 32 | 28.3 | 13 | 29.3 | 12 | 19.4 | 6 | -9.9 | -8.9 |
| New Beith | 74 | 78 | 70 | 32.4 | 22 | 28.6 | 22 | 14.9 | 10 | -13.7 | -17.5 |
| North Maclean | 21 | 18 | | | 8 | | 4 | | | | |
| Park Ridge | | 20 | 33 | | | | 30 | | 6 | 32.3 | 10 |
| Regents Park | 181 | 208 | 202 | 24.6 | 43 | 27.3 | 54 | 25.8 | 50 | -1.5 | 1.2 |
| Rochedale South | 225 | 234 | 222 | 29.3 | 63 | 24.8 | 56 | 24.5 | 53 | -0.3 | -4.8 |
| Shailer Park | 131 | 175 | 186 | 21 | 26 | 23.1 | 39 | 23.3 | 41 | 0.2 | 2.3 |
| Slacks Creek | 192 | 169 | 157 | 33.9 | 60 | 32.5 | 53 | 35.6 | 52 | 3.1 | 1.7 |
| South Maclean | 21 | | | | 3 | | | | | | |
| Springwood | 138 | 117 | 98 | 23.3 | 30 | 29.5 | 33 | 19.4 | 18 | -10.1 | -3.9 |
| Tanah Merah | 78 | 69 | 67 | 28.9 | 22 | 36.4 | 24 | 31.3 | 20 | -5.1 | 2.4 |
| Underwood | 81 | 120 | 101 | 33.3 | 26 | 32.5 | 37 | 27.8 | 27 | -4.7 | -5.5 |
| Waterford | 56 | 90 | 127 | 34.6 | 18 | 32.9 | 28 | 36 | 41 | 3.1 | 1.4 |
| Waterford West | 96 | 99 | 113 | 34.9 | 29 | 34.1 | 31 | 27.8 | 30 | -6.3 | -7.1 |
| Windaroo | 35 | 51 | 34 | 12.1 | 4 | 25 | 12 | 9.4 | 3 | -15.6 | -2.7 |
| Woodridge | 251 | 232 | 243 | 40.2 | 92 | 39.2 | 87 | 37.7 | 86 | -1.5 | -2.5 |
| Yarrabilba | | 46 | 199 | | | 31.1 | 14 | 28.5 | 55 | -2.6 | |

*For the Logan aggregate figures we have used the AEDC results published for the Logan Local Government Area. We get a slightly different number if we calculate at the individual suburb level and then combine. We'll explore why this small difference existst in coming months.