

# LOGAN TOGETHER INTEGRATED GOVERNANCE MEETING AGENDA



## SECRETARIATS:

Jen Kyriacou (e) [j.kyriacou@griffith.edu.au](mailto:j.kyriacou@griffith.edu.au) (ph) 3382 1163 Logan Together Leadership Table

Ellen Ferris (e) [ellenferris456@bigpond.com](mailto:ellenferris456@bigpond.com) Logan Together Action Group

LT Backbone Team Project Administrative Support (e) [s.jankovic@griffith.edu.au](mailto:s.jankovic@griffith.edu.au) and [samantha.pearson@griffith.edu.au](mailto:samantha.pearson@griffith.edu.au)

## ACTION GROUP

| MEETING DATE  |         | 9.00 a.m. start Thursday 17 <sup>th</sup> October  |   |   |                        |   |   |   |                    |                            |   |
|---|---------|--|---|---|------------------------|---|---|---|--------------------|----------------------------|---|
| MEETING VENUE                                       |         | Meadowbrook Conference Room, Building L07 Room 4.07, Griffith University Logan Campus, University Drive, Meadowbrook |   |   |                        |   |   |   |                    |                            |   |
| TIME  | ITEM NO | ITEM TITLE   |   |   |                        |   |   |   |                    |                            |   |
| <b>OPENING SESSION</b>                              |         |  |   |   |                        |   |   |   |                    |                            |   |
| 9.00-9.05am   |         | Acknowledgment of Yugambah and Jagera people, sorry business and welcome and introductions                           |   |   |                        |   |   |   |                    |                            |   |
| TIME  | ITEM NO | ITEM TITLE   | ITEM DESCRIPTION  | WHO   | FORMAT                 | Logan Together Leadership Table           | Logan Together Action Group               | Warril Yari-Go                            | Government Network | Backbone Team and/or Board | NOTES/ATTACHMENTS   |
| <b>1 REVIEW PREVIOUS ACTIONS/DECISIONS</b>          |         |  |   |   |                        |   |   |   |                    |                            |   |
| 9.05-9.15am   | 1.1     | <b>Minutes and actions from previous meeting</b>   | Table and approve minutes and review actions  | Matthew Cox   | Update                 | Table, Approve minutes and Review Actions | Table, Approve minutes and Review Actions | Table, Approve minutes and Review Actions |                    |                            | Attachment 1: Meeting Minutes                               |
| <b>2 STRATEGIC DISCUSSION ITEMS</b>                 |         |  |   |   |                        |   |   |   |                    |                            |   |
| 9.15-9.20am   | 2.1     | <b>The Leadership Table: launching into the next 5 years</b>   | Recruiting new co-chair<br>Membership refresh – finalising the composition<br>Planning for a Retreat  | Co-chairs and Matthew Cox   | Update                 | Information Only                          | Information Only                          |   |                    |                            |   |
| 9.20-9.40am   | 2.2     | <b>Health priorities</b>   | Preliminary advice to health partners about health reform priorities next 12 months   | Matthew Cox   | Handout and discussion | Discussion                                | Discussion                                |   |                    |                            |   |
| 9.40-9.50am   | 2.3     | <b>Annual Planning Process</b>   | Overview of proposed planning processes   | Matthew Cox   | Handout                | Information Only                          | Information Only                          |   |                    |                            |   |
| 9.50-10.05am  | 2.4     | <b>Emerging Issue: Shopping centre traps for vulnerable families</b>   | Preliminary discussion regarding businesses enticing vulnerable families into high cost financial commitments e.g. children's photos/ glamour photos/study. | Natalie Harvey<br>Penny Goodall (Backing Young Parents Working Group) | Discussion             |   | Discussion and Planning                   |   |                    |                            |   |
| <b>3 PROJECT UPDATES</b>                            |         |  |   |   |                        |   |   |   |                    |                            |   |
| 10.05-10.10am                                       | 3.1     | <b>Logan Together Live Register</b>  | Project status update   | Sue Jankovic  | Update                 | Information Only                          | Information Only                          |   |                    | Project Lead               | Attachment 2: Live Register<br>Attachment 3: Monthly Report |
| 10.10- 10.25am                                      |         | <b>Morning Tea Break &amp; Networking</b>  |   |   |                        |   |   |   |                    |                            |   |
| 10.25-10.45am                                       | 3.2     | <b>First Five Forever</b>  | Project status update   | Marnie Julin  | Discussion             |   | Discussion and input from members         |   |                    |                            |   |
| 10.45-11.20am                                       | 3.3     | <b>Going to Kindy and Enrol in Prep Campaign</b>   | Co-design strategies for First Nations Children<br>Project update and call to action  | Belinda Brown   | Workshop<br>Update     |   | Update and Planning                       | Co-design and planning                    |                    | Project Lead & Support     |   |
| <b>4 INFORMATION SHARING &amp; GENERAL BUSINESS</b> |         |  |   |   |                        |   |   |   |                    |                            |   |
|   | 4.1     | <b>Warril Yari-Go</b>  | Update from Warril Yari-Go  | John Davis  | Update                 | Information Only                          |   |   |                    |                            |   |
| 11.20-11.25am                                       | 4.2     | <b>Logan Get Together, ChangeFest</b>  | Evaluation of Get Together<br>Update re: ChangeFest   | Matthew Cox   | Update                 | Update                                    | Update                                    |   |                    |                            |   |
| <b>5 FORWARD AGENDA</b>                             |         |  |   |   |                        |   |   |   |                    |                            |   |
|   | 5.1     | <b>Access to Allied Health</b>   | Examine barriers to allied health access for children   |   | Workshop               | Discussion and planning                   | Discussion and planning                   | To be tabled                              |                    |                            |   |
|   | 5.2     | <b>Domestic &amp; Family Violence Workshop</b>   | Review gaps and how Logan Together can value add  |   | Workshop               | Discussion and planning                   | Discussion and planning                   |   |                    |                            |   |

# LOGAN TOGETHER INTEGRATED GOVERNANCE MEETING AGENDA

## SECRETARIATS:

Jen Kyriacou (e) [j.kyriacou@griffith.edu.au](mailto:j.kyriacou@griffith.edu.au) (ph) 3382 1163 Logan Together Leadership Table

Ellen Ferris (e) [ellenferris456@bigpond.com](mailto:ellenferris456@bigpond.com) Logan Together Action Group

LT Backbone Team Project Administrative Support (e) [s.jankovic@griffith.edu.au](mailto:s.jankovic@griffith.edu.au) and [samantha.pearson@griffith.edu.au](mailto:samantha.pearson@griffith.edu.au)



## ACTION GROUP

### MEMBERSHIP: ACTION GROUP

| First Name | Last Name  | Organisation   | Organisation Role  | Action Group Role | Email Address                           |
|------------|------------|--|--|-------------------|---|
| Angela     | TuiSamoa   | Logan Together Backbone Team, Leadership Table       | Community Empowerment Agent, Parent Representative       | primary           | a.tuisamoa@griffith.edu.au              |
| Carrie     | Rose       | Rosies Early Learning                                | Owner & Pedagogical Leader                               | primary           | carrie_rose@icloud.com                  |
| Cassandra  | Biddick    | Department of Child Safety, Women & Youth            | Principal Community Services Officer                     | primary           | Cassandra.Biddick@csyw,qld.ov.au        |
| Christine  | Gross      | YFS  | Manager Sure Steps Project                               | proxy             | christineg@yfs.org.au                   |
| Colleen    | Hickey     | Child Health Beenleigh & Logan                       | Clinical Nurse Consultant                                | proxy             | CHS-CNC-C4@health.qld.gov.au            |
| Courtney   | Gillott    | Logan Together Backbone Team                         | Community Engagement Lead                                | primary           | courtney.gillott@logantogogether.org.au |
| Debbie     | Miscamble  | The Salvation Army, Leadership Table                 | Communities Program Manager                              | primary           | debbie.miscamble@aue.salvationarmy.org  |
| Diana      | Townsend   | YFS  | Families Manager   | primary           | dianat@yfs.org.au                       |
| Donna      | Hanson     | Wesley Mission Qld                                   | Community Support Officer                                | primary           | d.hanson@wmq.org.au                     |
| Ellen      | Ferris     |  | Volunteer, Secretariat                                   | primary           | Ellenferris456@bigpond.com              |
| Faith      | Green      | Gunya Meta, Leadership Table                         | Manager, Mob Kinnectors                                  | primary           | faithg@mobkinnectors.com.au             |
| Finn       | Murphy     | The Benevolent Society                               | Community Development Worker                             | primary           | finn.murphy@benevolent.org.au           |
| Grainne    | Taia       | Access Community Services                            | Community HUB Coordinator                                | primary           | grainnet@acsl.org.au                    |
| Jo         | Bird       | Kingston State School                                | Guidance Officer   | proxy             | Jbird9@eq.edu.au                        |
| Jody       | Willoughby | Uniting Care Qld – Intensive Support                 | Local Service Manager Logan                              | primary           | Jody.willoughby@ucommunity.org.au       |
| Kerry      | Smith      | Griffith Uni & We Belong Family Day Care Centre      | Lecturer & Approved Provider                             | primary           | kerry.smith@griffith.edu.au             |
| Kim        | Wright     | KENG, Leadership Table                               | KENG Partnership Coordinator                             | primary           | manager@keng.org.au                     |
| Marisa     | Phillips   | Benevolent Society                                   | Manager Early Years Place                                | primary           | Marisa.phillips@benevolent.org.au       |
| Matthew    | Cox        | Logan Together Backbone Team                         | Director   | primary           | matthew.cox@griffith.edu.au             |
| Melanie    | Houghton   | UnitingCare Queensland                               | Community Services Manager SEQ Child and Family Programs | primary           | melanie.houghton@ucommunity.org.au      |
| Michael    | Jacobs     | KENG, Leadership Table                               | Men's Worker, Parent Representative                      | primary           | Michael.Jacobs@keng.org.au              |
| Natalie    | Harvey     | SYC-ParentsNext                                      | Team Leader  | primary           | nharvey@syc.net.au                      |
| Noel       | Summers    | Gunya Meta   | Board Member   | primary           | maibinyana41@yahoo.com                  |
| Norma      | Williams   | Uniting Care Queensland - Family Relationship Centre | Manager  | primary           | Norma.Williams@ucommunity.org.au        |
| Penny      | Goodall    | The Salvation Army                                   | Community Development Worker                             | primary           | Penny.goodall@aue.salvationarmy.org     |
| Rebecca    | Maurer     | Department of Child Safety, Youth & Women            | Integration Manager (Domestic & Family Violence)         | primary           | Rebecca.Maurer@csyw.qld.gov.au          |
| Samantha   | Pearson    | Logan Together Backbone Team                         | Projects Coordinator                                     | primary           | samantha.pearson@griffith.edu.au        |
| Sami       | Paul       | Uniting Care Community                               | Community Development Worker                             | primary           | samantha.paul@ucommunity.org.au         |
| Sharon     | Worboys    | Logan Together Backbone Team                         | Communications Specialist                                | primary           | sharon.worboys@griffith.edu.au          |

# LOGAN TOGETHER INTEGRATED GOVERNANCE MEETING AGENDA



## SECRETARIATS:

Jen Kyriacou (e) [j.kyriacou@griffith.edu.au](mailto:j.kyriacou@griffith.edu.au) (ph) 3382 1163 Logan Together Leadership Table

Ellen Ferris (e) [ellenferris456@bigpond.com](mailto:ellenferris456@bigpond.com) Logan Together Action Group

LT Backbone Team Project Administrative Support (e) [s.jankovic@griffith.edu.au](mailto:s.jankovic@griffith.edu.au) and [samantha.pearson@griffith.edu.au](mailto:samantha.pearson@griffith.edu.au)

## ACTION GROUP

|           |               |  |   |         |                                   |
|-----------|---------------|--|---|---------|-----------------------------------|
| Sheena    | Callaghan     | True Relationships & Productive Health               | Program Coordinator – Gold Coast Region | primary | Sheena.Callagahn@true.org.au      |
| Stephanie | Crick         | Kingston State School                                | Principal                               | primary | scric1@eq.edu.au                  |
| Sue       | Alexander     | Uniting Care Queensland - Family Relationship Centre | Manager                                 | proxy   | Sue.Alexander@uccommunity.org.au  |
| Sue       | Jankovic      | Logan Together Backbone Team                         | Deputy Director                         | primary | s.jankovic@griffith.edu.au        |
| Susan     | Cary          | Department of Education                              | Partnerships and Innovation Officer     | primary | Susan.CARY@qed.qld.gov.au         |
| Tania     | Collins-McCoy | Department of Social Services                        | Fund Agreement Manager                  | primary | tania.collinsmccoy@dss.gov.au     |
| Tariro    | Kajese        | Churches of Christ                                   | Fostering Case Worker                   | primary | tariro.kajese@cofcqld.com.au      |
| Ties      | Warta         | Mercy Community Services                             | LLA Facilitator                         | primary | Ties.Warta@mercycs.org.au         |
| Tracy     | Cook          | The Benevolent Society                               | Community Development Worker            | proxy   | Tracy.Cook@benevolent.org.au      |
| Victoria  | Parker        | Logan Together Backbone Team                         | Communications Lead                     | primary | v.parker@griffith.edu.au          |
| Wendy     | Kastelein     | Child Health Logan Central                           | Nurse Unit Manager                      | primary | Wendy.Kastelein@health.qld.gov.au |

# LOGAN TOGETHER INTEGRATED GOVERNANCE MEETING MINUTES

## SECRETARIATS:

Jen Kyriacou (e) [j.kyriacou@griffith.edu.au](mailto:j.kyriacou@griffith.edu.au) (ph) 3382 1163 Logan Together Leadership Table

Ellen Ferris (e) [ellenferris456@bigpond.com](mailto:ellenferris456@bigpond.com) Logan Together Action Group

LT Backbone Team Project Administrative Support (e) [s.jankovic@griffith.edu.au](mailto:s.jankovic@griffith.edu.au) and

[samantha.pearson@griffith.edu.au](mailto:samantha.pearson@griffith.edu.au)

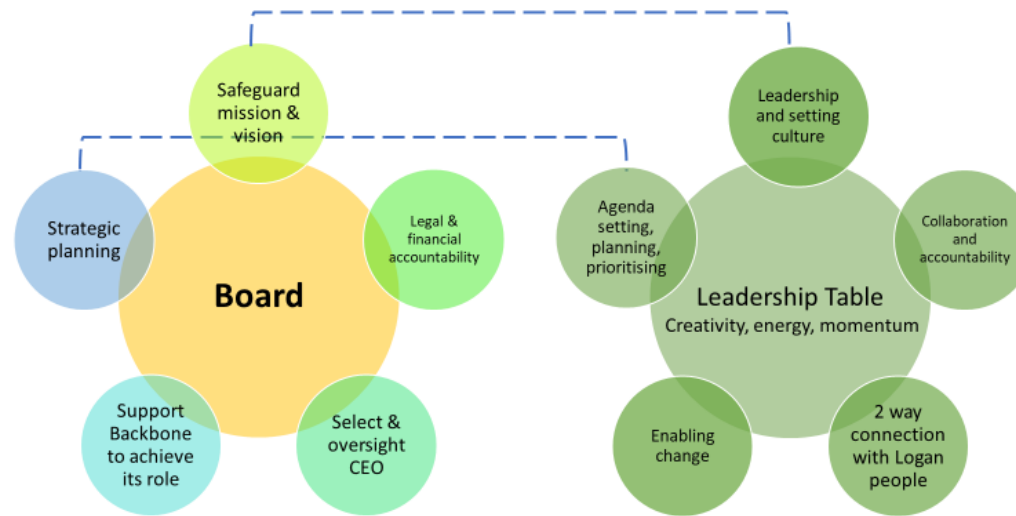
## JOINT MEETING: LEADERSHIP TABLE/ACTION GROUP

|                      |  |
|----------------------|--|
| <b>MEETING DATE</b>  | <b>Thursday 19<sup>th</sup> September</b>  |
| <b>MEETING VENUE</b> | <b>Collabatory Zone, Building L03, Griffith University Logan Campus, University Drive, Meadowbrook</b> |

| ITEM  | DISCUSSION/DECISION/ACTION   |
|---|--|
| <b>OPENING SESSION</b>  |  |
| Acknowledgment of Yugambeh and Jaggera people, sorry business and welcome and introductions | <p>The Chair welcomed everyone to the September meeting of the Logan Together Leadership Table (LT) and Action Group (AG) and noted the following apologies, proxies and guests.</p> <p>Guest: Darlene Arkininstall</p> <p>Leadership Table: Apologies/Proxies: Cath Bartolo (Proxy: Judith Hunter), Linda O'Brien, John Norfolk, Amanda Currie</p> <p>Action Group: Apologies/Proxies: Christine Grose, Grainne Taia, Susan Cary, Finn Murphy, Ties Warta, Rebecca Maurer</p> |
| <b>1. REVIEW PREVIOUS ACTIONS/DECISIONS</b>   |  |
| 1.1 Minutes and actions from the previous meeting   | The minutes from the July meeting (LT) and August Meeting (AG) were confirmed and all action items noted as being in progress.   |
| <b>2. STRATEGIC DISCUSSION ITEMS</b>  |  |
| 2.1 Logan Together Collaboration Arrangements   | Matthew Cox tabled a document detailing the role of the Logan Child Friendly Community Limited Board, including an update on the collaboration arrangements between the Board and the Leadership Table.  |

The Board of the Logan Child Friendly Community Limited is a company established to employ the Backbone Team and work with partners to deliver Logan Together. Responsibilities include receiving and managing funding, employing the backbone team and legal and financial accountability. Key roles include strategic planning, safeguard mission and vision, legal and financial accountability, select and oversight CEO, support backbone to achieve its role. The Leadership Table is the peak collaborative body for the Logan Together movement which brings together partners from community, sector, Government and business. Key roles include Agenda setting, planning and prioritising, leadership and setting culture, collaboration and accountability, two way connection with Logan people and enabling change. But there is no funding, staff or liability.

The below diagrams further clarify roles and overlap between the Board and Leadership Table:



|                                      |   |
|--------------------------------------|---|
| <b>Board – formal accountability</b> | <b>Leadership Table - collaboration</b> |
| Strategic planning                   | Agenda setting, planning, prioritising  |

|  |   |
|--|---|
| <ul style="list-style-type: none"> <li>• Ensures appropriate functioning of Leadership Table in its agenda setting task</li> <li>• Ensures Backbone fit for purpose and resourced to deliver Roadmap</li> <li>• Oversees Backbone Operational Plan</li> <li>• Plan ahead to ensure Roadmap and the Movement can be delivered.</li> </ul> | <ul style="list-style-type: none"> <li>• Develops Roadmap</li> <li>• Agrees priorities for collaboration</li> <li>• Brings opportunities to table</li> <li>• Taps networks to make things happen</li> <li>• Planning and strategy (shared with Backbone Team and Board)</li> <li>• Identifying and reducing duplications / targeting effort / filling gaps</li> </ul> |
| Safeguarding mission and vision  | Leadership and setting culture  |
| <ul style="list-style-type: none"> <li>• Is ultimately responsible for fostering the Movement ... is funded to do so</li> <li>• Ensuring the structures, processes, ethos, purpose is maintained</li> </ul>  | <ul style="list-style-type: none"> <li>• Translating the ChangeFest statement</li> <li>• Maintain focus on Logan Together objectives</li> <li>• Holding the way of working together</li> <li>• Building a culture within own organisations: committing to change within organisations</li> <li>• Being creative</li> </ul>  |

The proposed relationship between the Board and the Leadership Table is as follows:

A skills-based board of 7.

- Two (2) member appointed
- Four (4) skills based board appointments
- One (1) of the two co-chairs of the Leadership Table (rotating)

Membership – The “shareholders”

- Individuals or organisations
- Membership approved or otherwise by current members
- Membership criteria TBC
- Membership fees?

The current members of the Board are Geoff Woolcock, Margaret Allison, Lesley Chenoweth, Cath Bartolo, Brit Ibanez and Linda O’Brien.

|  |   |
|--|---|
|  | <p>Matthew asked the members for their feedback on this proposal. Discussion ensued between the members with the following comments:</p> <ul style="list-style-type: none"> <li>• Some members had the experience of their Boards being overly focused on finance and risk management, so there does need to be a safeguard about bringing the balance of community and sociological knowledge, together with a passion for the work.</li> <li>• Consciousness regarding the gender and cultural balance.</li> <li>• Conflict of interest processes regarding Board members who are also representatives of Logan organisations, specifically when it comes to the stage that funding decisions might be made.</li> <li>• Important not to rely solely on CVs for those Board members appointed on a skills basis to ensure good character and practices.</li> <li>• When appointing the skills based positions, consider Logan community members for these roles.</li> <li>• Constitution reflects the Logan Together vision and mission.</li> <li>• From a government perspective, looking for a good balance of skills and community representation.</li> </ul> <p>The question to be posed to the Board is how can we include community voice is included, valued and heard at the governance level, along with skills based roles. Margaret Allison acknowledged there needed to be further opportunities for the Board and Leadership Table members to come together, so that there is knowledge and communication between the two. These comments will be taken back to the Board for consideration.</p> |
| <p>2.2 Early Years Neighbourhood Network</p> | <p>Darlene Arkinstall (Department of Education) presented on the progress reports from the Early Years Neighbourhood Networks (EYNN). Darlene referred to the AEDC data and noted the networking with agencies and work coming out of Logan Together has contributed to a reduction in vulnerability at 4x the average rate in Queensland. Between 2015-2018 the rest of Queensland reduced vulnerability on one or more domains by .2%, however South East Region, which includes Logan reduced by .9%. To achieve the government’s target of 22% vulnerability on one or more domains of the AEDC by 2025, we will need to reduce vulnerability in Logan by approximately 220 kids. We are on track to do achieve this, but we need a greater focus on intentionality and need to amplify our efforts.</p> <p>The Education Department formed the EYNNs, where early childhood centres and schools engage in professional development, understanding development milestones, consider what age appropriate teaching looks like, and exchange information between the centres and schools so kids make a good transition. There are Early years coaches in several areas, Eagleby, Yarrabilba, Marsden/Kingston and Waterford. When we look at the data a few of the schools that are part of neighbourhood networks are showing promising results due to the intentional planning to improve outcomes and attendance. i.e. One school reported</p>  |

|  |  |
|--|--|
|  | <p>improved attendance at school, a reduction in % of children at risk, smoother transition to school and higher achievement data for the children who attended Early Childhood centres that are actively involved in the Neighbourhood Network.</p> <p>Where we need more intentionality is networks that don't have coaches. Coaches are currently funded to June 2020, as it was intended as 'seeding' funding. However we will work with principals to see if they have an appetite to fund past 2020. The Department of Education is also employing a new Manager Early Years, who will be looking at developing and enacting community commitment plans. They will manage a team of four of five Early Years Partnership Facilitators that will be required to support the South East region, with a strong focus on Logan Neighbourhood Networks. The manager's role will also review what capability development is required to support ECECs to improve quality and improve children's wellbeing within selected neighbourhood networks. The top ten areas where vulnerability is the highest will be prioritised. Accordingly, we want to partner with agencies that can contribute to capability building, services or support that can contribute to improving children's wellbeing.</p> <p>Currently the areas with the most vulnerable children are Jimboomba and Marsden. Department of Education working with the health sector will be another key piece of work, and this is already occurring in Waterford/Eagleby with nurses attending health screening in the early childhood centres and support being provided to families with low health literacy.</p> <p>On query, it was noted there isn't an identified Aboriginal Torres Strait Islander role within these new positions, but this will be very welcome and it will be something that is considered. It was suggested the Department of Education engage with Warril Yari-Go, Beenleigh Housing &amp; Development Company and Gunya Meta to enable input into commitment plans and practices. It was suggested an identified position be engaged.</p> <p>It was queried why there isn't a ten-year approach. It was explained the investment into the Early Years Coaches is made by the schools, and a number of schools are sharing those costs between schools.</p> |
| <p>2.3 Celebration of Leadership Table and future priorities</p> | <p>Matthew Cox advised the members there was an opportunity at this special joint meeting to consider where we are at in the Logan Together journey, what has worked and what hasn't. This information will be shared with the new Leadership Table. Members workshopped the following - priorities; best things so far; mistakes, learnings and things that didn't work:</p> <p><b>2020 Priorities – What should we as a movement be focussed on in 2020?</b></p> <ul style="list-style-type: none"> <li>• <b>What specific projects? (e.g. Early Years Neighbourhood Networks or Young Parents)</b></li> <li>• <b>What processes or ways of working? (e.g. more engagement with xx community or roll out of the Children's Charter)</b></li> <li>• <b>What emerging issues? (e.g. need to focus on physical activity).</b></li> </ul> <p>Group 1:</p> <ul style="list-style-type: none"> <li>• Early Years 2.0 Advocacy and systems – family day care; advocating for play based learning in ECEC;</li> </ul>  |



- Relationship with Warril Yari-Go.

Group 2:

- Get paediatric assessments/paediatricians into Logan to increase access and reduce wait times (very significant);
- DV prevention that works at grass roots level;
- Build on maternity hubs – more integration with child health; stronger community linkages; potential satellite sites in hubs;
- Service integration – find ways to engage with vulnerable families early and then do it; and
- NDIS access improvements.

Group 3:

- Warril Yari-Go to strengthen own community and show how to do this “own way” and weave through western lens;
- Children’s Charter being rolled out to business across Logan;
- Lift the quality of early childhood practice;
- Breaking down the silos of governments, organisations, moving to place based funding; and
- Social investment remains high in particular jobs, families, community.

Group 4:

- Expanding maternity hubs to more communities;
- Hearing the voice of children;
- Cross sector training sexual abuse prevention and early intervention – perhaps a link to Children’s Charter, child safe organisation;
- Access to efficient and timely allied health – advocacy, especially in fringe communities e.g. Jimboomba; and
- Continue to build on the work of connection with our First Nations people.

**Best things so far:**

Group 1

- Willingness to change and willingness to change for better good;
- Openness to listening;
- Emerging relationship Warril Yari-Go;
- ChangeFest and establishment of the Logan Get Together but needs to be more externally focussed; and
- Even though GU base, LT has own independent identity.

Group 2

- Maternity and Child Health Hubs – community voice, implemented well but needs further consideration, mobile hubs would be good;
- Neighbourhood hubs – do things differently – however we haven’t qualified/determined what that is, we need to establish a model (flexible);

- Warril Yari-Go – Partnership has created stronger link to understanding their priorities and how we should strengthen the way we support them; and
- Children’s Charter – now need effective roll out into the community.

Group 3

- ChangeFest;
- Having the data to show improvements;
- Robust and open discussion – we are getting better at taking on the learning and think others, the learning is travelling further and influencing practices in organisations;
- Inclusion of all voices safe space;
- Transparency;
- Looking through cultural lens much better, more open to collaboration and partnerships, not just the same;
- Government connections are becoming more real and creating impact;
- Warril Yari-Go – to show “our way” through indigenous knowledge;
- Incredible bravery;
- Rather than usual suspect, whats the mutual benefit; and
- More participatory.

Group 4

- Maternity Hubs;
- Neighbourhood networks;
- More work supporting dads;
- Beautiful community resources;
- Warril Yari-Go;
- Development of the Logan’s Children Charter;
- New format Action Group – commitment steering toward action; and
- Kindy Conversations, Get set for prep, work around scholarships.

**Mistakes, learning and things that didn’t work**

Group 1

- The need to have more community representation; and
- Clarifying purpose difficult to with regular turnover – led to some circularity.

Group 2

- Maternity Hubs – Queensland Health took too long to work out how to set up processes. Hold too tight to referrals and linkages (initial issue now evolved). Need to focus on the cultural aspect – interpret on how to operationalise on the ground.

Group 3

|   |   |
|---|---|
|   | <ul style="list-style-type: none"> <li>• Chapters didn't work – took time to realise this;</li> <li>• Dispute resolution was not an articulated process;</li> <li>• First Nations people off the radar;</li> <li>• Too much telling about what needed to be done;</li> <li>• No transparency;</li> <li>• Community collaboration was not well done;</li> <li>• Coming off from being so competitive then into Logan Together was confusing, difficult;</li> <li>• Need lots more First Nations voice across all aspects of the journey.</li> </ul> <p>Group 4</p> <ul style="list-style-type: none"> <li>• Too many projects at one point, not effective use of resources;</li> <li>• More community voice – representation, consultation and engagement;</li> <li>• Taking the time to consider cultural perspective;</li> <li>• Hard to reach families versus hard to reach services;</li> <li>• Capturing data around the number of families turned away, referred on;</li> <li>• Families falling through the cracks, capturing families not linked into anything;</li> <li>• Focus and push for support for young parents, preventatives, education; and</li> <li>• Linking in with existing programs – for example LCC Livewell Logan to happen.</li> </ul> |
| <b>PROJECT UPDATES</b>                          |   |
| <b>3.1 Live Register</b>                        | The Live Register and monthly report were tabled to the members.  |
| <b>3.2 ChangeFest/Logan Get Together</b>        | <p>ChangeFest will be held 20-22<sup>nd</sup> November in Mount Druitt, Western Sydney. There will be several community scholarships available which will include ticket price and travel. We are currently arranging an EOI process for these scholarships.</p> <p>Thanks to members for attending The Logan Get Together. An evaluation report is being prepared. It is anticipated The Logan Get Together 2020 will be held at the Beenleigh Eagleby Wetlands.</p>   |
| <b>INFORMATION SHARING AND GENERAL BUSINESS</b> |   |
| <b>4.1 Warril Yari-Go</b>                       | <p>LT Co-Chair, John Davis, provided an update on Warril Yari-Go. The members have been working on processes of open and closed meeting structures and processes for Agenda setting. How can we best work together – the two rivers closer together. The members also visited with the Yugambeh and the Jaggera Traditional Owners and have their blessings for the continued work of Warril Yari-Go.</p>   |
| <b>MEETING CLOSED</b>                           | 11.35 A.M.  |



## MEMBERSHIP

|                           |   |  |
|---------------------------|---|--|
| Margaret Allison          | Co-Chair                                      | margaret.allison4@gmail.com                              |
| John Davis                | Co-Chair                                      | john.davis@strongersmarter.com.au                        |
| Allison McClean           | Waterford West State School                   | Amccl10@eq.edu.au  |
| Amanda Currie             | Dept. of Child Safety, Youth and Women        | amanda.currie@communities.qld.gov.au                     |
| Andrea World              | Community Representative                      | worldy@bigpond.net.au                                    |
| Angela TuiSamoa           | Community Representative                      | angelange72@hotmail.com                                  |
| Cath Bartolo              | YFS   | cathb@yfs.org.au   |
| Bev Book / Felicia Dingle | The Benevolent Society                        | Bev.Book@ndis.gov.au<br>Felicia.Dingle@benevolent.org.au |
| Craig Kennedy             | Child and Youth Community Health Services     | craig.kennedy2@health.qld.gov.au                         |
| David Crompton            | Addiction and Mental Health                   | David.crompton@health.qld.gov.au                         |
| Debbie Miscamble          | The Salvation Army / Communities for Children | debbie.miscamble@aue.salvationarmy.org                   |
|                           |   |  |
| Aunty Faith Green         | Community Representative                      | fgreen1965@gmail.com                                     |
| Geoff Woolcock            | Logan Child Friendly Community Limited        | Geoffrey.Woolcock@usq.edu.au                             |
| Jacinta Powell            | Logan Hospital                                | Jacinta.powell@health.qld.gov.au                         |
| Jody Taylor-Robinson      | Dept. of Human Services                       | Jody.Taylor-Robinson@humanservices.gov.au                |
| John Norfolk              | Dept. of Education                            | john.norfolk@qed.qld.gov.au                              |
| Josephine Aufai           | Community Representative                      | aufaijo@gmail.com  |
| Karen Dawson Sinclair     | Community Representative                      | k.dawsonsinclair@griffith.edu.au                         |
| Kim Wright                | Kingston East Neighbourhood Group             | manager@keng.org.au                                      |
| Linda O'Brien             | Griffith University                           | linda.obrien@griffith.edu.au                             |
| Lisa Ward                 | Access  | LisaW@acsl.org.au  |
| Louise Litchfield         | Brisbane South PHN                            | llitchfield@bsphn.org.au                                 |
| Mary Anne Collier         | Yourtown                                      | mcollier@yourtown.com.au                                 |
| Matthew Cox               | Logan Together                                | matthew.cox@griffith.edu.au                              |
| Michael Jacobs            | Community Representative                      | admin@keng.org.au  |
| Melanie Houghton          | UnitingCare                                   | Melanie.Houghton@uccommunity.org.au                      |

|                 |   |                              |
|-----------------|---|------------------------------|
| Nick McGuire    | Logan City Council                        | nickmcguire@logan.qld.gov.au |
| Nicola Cooke    | Anglicare Southern Queensland             | NCooke@anglicaresq.org.au    |
| Phillip Rankine | Department of Social Services             | phillip.rankine@dss.gov.au   |
| Roger Marshall  | Logan East Community Neighbourhood Assoc. | rogermarshall@bigpond.com    |

#### Action Register

| Action Number | Date     | Action  | Who | Due by |
|---------------|----------|---|-----|--------|
| 51            | 13/9/18  | Request Logan employment initiatives to attend to brief the CSLT in the future.                         |     |        |
| 54            | 11/07/19 | Nick McGuire and Matthew Cox to meet to discuss the roll out of the Logan Child Friendly City Tool Kit. |     |        |

#### Decision Register

| Decision Number | Date made | Decision  |
|-----------------|-----------|---|
| 1               | 11/03/16  | Accept the Terms of Reference as a working document.  |
| 2               | 11/03/16  | To allow for additional proxy members as long as they are fully briefed prior to attending the meeting.   |
| 3               | 13/05/16  | A long-term Roadmap to be delivered at the end of 2016  |
| 4               | 10/06/16  | The Leadership Table endorsed the statement of project priorities as reflecting the Table's views.  |
| 5               | 12/08/16  | The Leadership Table endorsed the Maternity Continuity of Care proposal in principal, subject to the detailed written proposal being finalised with stakeholders.   |
| 6               | 14/10/16  | The Leadership Table endorsed the concept proposal for the Early detection and support for developmental vulnerabilities project and supports further development of the project.   |
| 7               | 14/10/16  | The Leadership Table endorsed the Multidisciplinary support for Early Childhood Centres project proposal in principal and supports progress towards the development of a co-designed model of delivery  |
| 8               | 11/11/16  | Leadership Table endorsed progressing the following 3 focus projects arising from Project 11 (Early Detection and Support) for further development: <ul style="list-style-type: none"> <li>● the development of transdisciplinary support teams to work across early childhood services in several priority districts in the city</li> <li>● the integration of public education messaging and activities relating to child health support as part of a wider Logan Together community engagement and mobilisation campaign</li> <li>● the development of tools and processes to support better joined up clinical pathways.</li> </ul> |
| 9               | 09/12/16  | The Leadership Table provided concept approval for the Ensuring Logan P-2 children have adequate nutrition to learn and grow project for further development, subject to an explicit community co-design component to the project.  |

|    |          |  |
|----|----------|--|
| 10 | 10/2/17  | The 0-8 Community Partners project received concept approval subject to more work being done to resolve the two issues raised and subject to a further presentation on the campaign design by Red Suit.  |
| 11 | 10/3/17  | The Young Parents Under 19 project received concept approval   |
| 12 | 10/3/17  | School neighbourhoods were agreed as the basis for geographic segmentation of the city.  |
| 13 | 17/6/17  | The Early Childhood Education and Transdisciplinary Support concept was endorsed for further development, noting the various points of feedback, most particularly the need to resolve how health supports are provided into the model and how the model will link to the introduction of the NDIS. The proposal should come back to the Leadership Table for further review as it develops.   |
| 14 | 14/07/17 | The Early Years Campaign concept was endorsed. The Cross Sector Leadership Table will act as strategic oversight for the concept. Additionally a project group will be formed including community and marketing personnel from Logan Together community partners to further the concept.   |
| 15 | 08/09/17 | The Community Connection and Engagement Strategy (Draft 2.2) was endorsed.   |
| 16 | 08/09/17 | Cross Sector Leadership Table meetings to be rescheduled to Thursdays for the first half of 2018 on trial.   |
| 17 | 10/11/17 | Phase one implementation of the Community Connection & Engagement Strategy, within the current Logan Together budget, was adopted. The Director has been tasked with finding additional funds to expand Stage 1.   |
| 18 | 8/12/17  | The Logan Together Project Status Update is adopted by the CSLT as a reporting tool to be tabled quarterly.  |
| 19 | 8/2/18   | Strategic Projects being undertaken by Logan Together to be expanded to now include Community Gateways.  |
| 20 | 13/09/18 | Jobs for Families project to sit idle with no further action at this point in time.  |
| 21 | 14/02/19 | <ol style="list-style-type: none"> <li>1. The Leadership Table adopt and implement the vision and principles embedded in the ChangeFest 2018 Statement for the practices, policies and projects in Logan Together.</li> <li>2. The member agencies of the Leadership Table commit to: <ol style="list-style-type: none"> <li>a. Taking the ChangeFest 2018 Statement back to their Boards or governing bodies with a view to adopting it and translating it to action.</li> <li>b. Making other organisations in their networks aware of the ChangeFest 2018 Statement, and its importance to their services and operations, and engage them to also commit to its vision and principles.</li> </ol> </li> </ol> |
| 22 | 11/07/19 | The Logan Child Friendly Children's Charter and Toolkit was adopted by the Leadership table.   |
| 23 | 11/07/19 | The Leadership Table members supported the Kindy Conversations and Enrol to Prep program of work, and relaunch of the Project, based on the recommendations.   |

LOGAN TOGETHER INTEGRATED GOVERNANCE - LIVE REGISTER

Sep-19 V3.0



| Roadmap Ref         | Roadmap Priority   | Project Progress | Project Phase           | Item  | Lead                           | Partner Organisation             | Location   | Date Opened | Date Due   | Date Closed                       | Status                            |
|---------------------|--|------------------|-------------------------|---|--------------------------------|----------------------------------|--|-------------|------------|-----------------------------------|-----------------------------------|
| <i>Roadmap Ref</i>  | <i>Priority</i>  | <i>Status</i>    | <i>Project Phase</i>    | <i>Item Name</i>  | <i>Lead Partner</i>            |                                  | <i>Suburbs of focus</i>  |             |            | <i>When was the action closed</i> | <i>Select from drop down menu</i> |
| Good Start in Life  | Boosting Access to Care for Parents and Babies               | On Track         | Implementation & Review | <b>Community Maternity and Child Health Hubs</b>        | PHN/Matthew Cox                | PHN/LTBB Team                    | Browns Plains, Waterford West, Slacks Creek (Village Connect), Logan Central |             |            |                                   | Open                              |
| Good Start in Life  | Healthy habits during and after birth (Roadmap Priority 1-5) | On Track         | Implementation & Review | <b>Right @ Home</b>                                     | Belinda Brown/Wendy Kastelein  | Children's Health Queensland     | City wide (excluding some southern suburbs)                                  |             |            |                                   | Open                              |
| Good Start in Life  | Healthy habits during & after birth (Roadmap Priority 1-5)   | On Track         | Assess and Plan         | <b>Backing Young Parents</b>                            | Under review                   | Communities for Children         | City wide  |             |            |                                   | Open                              |
| On Track at 3 Years | Reading, talking and singing                                 | On Track         | Implementation & Review | <b>Logan's Little Learners</b>                          | Marnie Julin                   | First Five Forever               | City wide  |             |            |                                   | Open                              |
| On Track at 5 years | Successful transitioning to school                           | On Track         |                         | <b>Kindy to Prep Program</b>                            | Belinda Brown                  | Logan Together Backbone Team     | Woodridge, Marsden, Kingston, Beenleigh, Berrinba, Eagleby                   |             |            |                                   | Open                              |
| On Track at 5 years | Attending a quality Kindergarten Program                     | On Track         | Implementation & Review | Kindy Conversations                                     | Penny Goodall                  | CFC                              | City wide  |             |            |                                   | Open                              |
| On Track at 5 years | Attending a quality Kindergarten program                     | On Track         | Assess and Plan         | Kindy Communication Activities                          | Victoria Parker                | Logan Together Backbone Team     |  |             |            |                                   | Open                              |
| On Track at 5 years | Attending a quality Kindergarten program                     | On Track         | Implementation & Review | Kindy Scholarships                                      | Belinda Brown                  | Logan Together Backbone Team     |  |             |            |                                   | Open                              |
| On Track at 5 years | Attending a quality Kindergarten program                     | On Track         | Assess and Plan         | Other Barriers to Kindy Participation                   | Belinda Brown                  | Logan Together Backbone Team     |  |             |            |                                   | Open                              |
| On Track at 5 years | Attending a quality Kindergarten program                     | On Track         | Assess and Plan         | Kindy Programs - Bespoke Options:                       |                                |                                  |  |             |            |                                   | Open                              |
| On Track at 5 years | Attending a quality Kindergarten program                     | On Track         | Assess and Plan         | - Specialist Kindy Projects Under Development           | Belinda Brown                  | Logan Together Backbone Team     |  |             |            |                                   | Open                              |
| On Track at 5 years | Attending a quality Kindergarten program                     | On Track         | Assess and Plan         | - Samoan Kindy (Aoga Amata)                             | Naomi Pelite                   | Village Connect                  | Crestmead  |             |            |                                   | Open                              |
| On Track at 5 years | Attending a quality Kindergarten program                     | On Track         | Implementation & Review | - Burragah Kindy and Deadly kindy                       |                                | ATSICHS/C&K                      | Logan Central, Kingston  |             |            |                                   | Open                              |
| On Track at 5 years | Attending a quality Kindergarten Program                     | On Track         | Implementation & Review | - RASEC Pilot (Refugees & Asylum Seekers)               | Sahba Hamid                    | Access                           | City Wide  |             |            |                                   | Open                              |
| On Track at 5 years | Successful transitioning to school                           | On Track         | Assess and Plan         | Positive Start to School Initiatives                    | Belinda Brown                  | Logan Together Backbone Team     |  |             |            |                                   | Open                              |
| On Track at 5 years | Successful transitioning to school                           | On Track         | Assess and Plan         | Enrol to Prep Campaign                                  | Victoria Parker                | Logan Together Backbone Team     |  |             |            |                                   | Open                              |
| Family Foundations  | Parents feel knowledgeable and confident                     | On Track         | Assess and Plan         | <b>Stronger Parenting Campaign</b>                      | Victoria Parker                | Logan Together Backbone Team     | City Wide  |             |            |                                   | Open                              |
| Family Foundations  | Social emotional wellbeing for all the Family                | On Track         | Implementation & Review | <b>Mums &amp; Bubs Facebook</b>                         | Nat Millar                     | Logan Together Backbone Team     | City wide  |             |            |                                   | Open                              |
| Strong Community    | Social Connection Healthy & Physically Active (OT8)          | On Track         | Assess and Plan         | <b>Sport 4 Development</b>                              | TBA                            | Logan Together Backbone Team     | Kingston, Woodridge, Eagleby   |             |            |                                   | Open                              |
| Strong Community    | An Empowered Community                                       | On Track         | Implementation & Review | <b>Logan Children's Charter and Toolkit Project</b>     | Carrie Rose                    | Rosie's Early Centre             | City Wide  |             |            |                                   | Open                              |
| Strong Community    | An Empowered Community                                       | Off Track        | Implementation & Review | <b>NDIS Activation</b>                                  | To be assigned                 | Benevolent Society/Carers QLD    | City Wide  |             |            |                                   | Open                              |
| Strong Community    | Social Connection and Empowered Community                    | On Track         | Implementation & Review | <b>Changefest/National Network</b>                      | John Anderson/Vic Parker       | Logan Together Backbone Team     | National   |             |            |                                   | Open                              |
| Strong Community    | Social Connection and Empowered Community                    | On Track         | Assess and Plan         | <b>CFC Evidence Based Programs</b>                      | Deb Miscamble/Sue Jankovic     | Logan Together Backbone Team/CFC |  | 1/07/2019   | 30/06/2020 |                                   | Open                              |
| Strong Community    | Social Connection and Empowered Community                    | On Track         | Assess and Plan         | Logan Rivers Community Connections                      | Courtney Gillett               | Logan together Backbone Team     | Logan River, Yarrabilba  |             |            |                                   | Open                              |
| Strong Community    | Social Connection and Empowered Community                    | On Track         | Assess and Plan         | Beenleigh Housing Service Delivery                      | Will Davis                     | Beenleigh Housing                | Beenleigh  |             |            |                                   | Open                              |
| Strong Community    | Social Connection and Empowered Community                    | On Track         | Assess and Plan         | Gunya Meta Service Delivery                             | Aunty Faith Green              | Gunya Meta                       | Logan Central  |             |            |                                   | Open                              |
| Effective Systems   | Social Investment Reform                                     | On Track         | Assess and Plan         | <b>Logan Investment Reform</b>                          | Matthew Cox                    | YFS, Uniting Care, CSIA          | City Wide  | 28/06/2019  | 3/12/2019  |                                   | Open                              |
| Effective Systems   | Child development workforce strategies                       | On Track         | Assess and Plan         | <b>Early Childhood Workforce Development Initiative</b> | Belinda Brown                  | Logan Together Backbone Team     | City Wide  |             |            |                                   | Open                              |
| Effective Systems   | Social Investment Reform                                     | On Track         | Implementation & Review | <b>Community Gateways</b>                               | Sue Jankovic/Jon Eastgate      | Logan Together Backbone Team     | City Wide  |             |            |                                   | Open                              |
| Effective Systems   | Social Investment Reform                                     | On Track         | Assess and Plan         | <b>Sure Steps family Coaching</b>                       | Christine Grose                | YFS                              | City Wide  |             |            |                                   | Open                              |
| Effective Systems   | Multi-agency Service Integration                             | On Track         |                         | <b>Transdisciplinary Support (Health Pathways)</b>      | Matthew Cox                    | Logan Together Backbone Team     | City Wide  |             |            |                                   | Open                              |
| Effective Systems   | Multi-agency Service Integration                             | On Track         | Implementation & Review | TOTs Project  | Tracey Button/Phillipa Calabro | PHN South Brisbane               | Waterford West, Eagleby  |             |            |                                   | Open                              |

| COMPLETED PROJECTS  |  |          |                         |  |                |  |  |  |  |  |          |
|---------------------|--|----------|-------------------------|--|----------------|--|--|--|--|--|----------|
| Family Foundations  | Parents Feel Knowledgeable and Confident | On Track | Implementation & Review | <b>Under 8's Week</b>  | Vic Parker     | Logan Together Backbone Team                     | Eagleby, Beenleigh, Logan Central, Loganholme, Browns Plains |  |  |  | Complete |
| On Track at 3 years |  | On Track | Implementation & Review | <b>First Three Years</b>   |                | Logan Together Backbone Team                     |  |  |  |  | Complete |
|                     |  | On Track | Assess and Plan         | <b>Youth Homelessness</b>  | Finn Murphy    | LLA  | City Wide  |  |  |  | Complete |
| Effective Systems   | Child development workforce strategies   | On Track | Implementation & Review | <b>Domestic &amp; Family Violence School Workforce Development Project</b> | Rebecca Maurer | Domestic and Family Violence - South East Region | City wide  |  |  |  | Complete |