

# LOGAN TOGETHER INTEGRATED GOVERNANCE MEETING AGENDA



## SECRETARIATS:

Jen Kyriacou (e) [j.kyriacou@griffith.edu.au](mailto:j.kyriacou@griffith.edu.au) (ph) 3382 1163 Logan Together Leadership Table

Ellen Ferris (e) [ellenferris456@bigpond.com](mailto:ellenferris456@bigpond.com) Logan Together Action Group

LT Backbone Team Project Administrative Support (e) [s.jankovic@griffith.edu.au](mailto:s.jankovic@griffith.edu.au) and [samantha.pearson@griffith.edu.au](mailto:samantha.pearson@griffith.edu.au)

## JOINT MEETING: LEADERSHIP TABLE/ACTION GROUP

<b>MEETING DATE</b>	<b>9.30 a.m. start Thursday 19<sup>th</sup> September</b>
<b>MEETING VENUE</b>	<b>Collabatory Zone, Building L03, Griffith University Logan Campus, University Drive, Meadowbrook</b>

TIME	ITEM NO	ITEM TITLE
<b>OPENING SESSION</b>		
9.00-9.05am		Acknowledgment of Yugambah and Jagera people, sorry business and welcome and introductions

TIME	ITEM NO	ITEM TITLE	ITEM DESCRIPTION	WHO	FORMAT	Logan Together Leadership Table	Logan Together Action Group	Warril Yari-Go	Government Network	Backbone Team and/or Board	NOTES/ATTACHMENTS
<b>1 REVIEW PREVIOUS ACTIONS/DECISIONS</b>											
9.05-9.10am	1.1	<b>Minutes and actions from previous meeting</b>	Table and approve minutes and review actions	Matthew Cox	Update	Table, Approve minutes and Review Actions	Table, Approve minutes and Review Actions	Table, Approve minutes and Review Actions			Attachment 1: Meeting Minutes
<b>2 STRATEGIC DISCUSSION ITEMS</b>											
9.10-9.30am	2.2	<b>Logan Together Collaboration Arrangements</b>	Update on collaboration between Board, Leadership Table, Warril Yari-Go and Action Group	Matthew Cox	Update	Information Only	Information Only				
9.30-10.10am	2.3	<b>Celebration of Leadership Table and future priorities</b>	Review of 2019 and priorities for 2020	Matthew Cox	Workshop	Discussion and Planning	Discussion and Planning				
<b>3 PROJECT UPDATES</b>											
10.10-10.20am	3.1	<b>Logan Together Live Register</b>	Project status update	Sue Jankovic	Update	Information Only	Information Only			Project Lead	Attachment 2: Live Register Attachment 3: Monthly Report
10.20-10.40am	3.2	<b>Early Years Neighbourhood Network</b>	Overview progress to date and next steps	Darlene Arkinstall	Update	Information Only	Information Only				
10.40-11.00am	3.2	<b>Logan Get Together / ChangeFest</b>	Project status update	Matthew Cox	Update	Information Only	Information Only				
	3.4	<b>Local Thriving Communities Bullang Bujerum, Path to Treaty</b>	Engaging with Dr Chris Sarra re: Logan	Robyn Kerr	Discussion			Discussion			
	3.3	<b>Going to Kindy and Enrol in Prep Campaign</b>	Co-design strategies for First Nations Children	Matthew Cox	Workshop			Co-design and planning		Project Lead & Support	
<b>4 INFORMATION SHARING &amp; GENERAL BUSINESS</b>											
11.00-11.15am	4.1	<b>Warril Yari-Go</b>	Update from Warril Yari-Go	John Davis	Update	Information Only	Information Only				
11.15-11.30am	4.2	<b>October Agenda</b>	Discussion regarding Agenda items for October Leadership Table and Action Group	Margaret Allison John Davis Matthew Cox	Discussion	Discussion and Planning	Discussion and Planning				
<b>5 FORWARD AGENDA</b>											
	5.1	<b>Access to Allied Health</b>	Examine barriers to allied health access for children		Workshop	Discussion and planning	Discussion and planning	To be tabled			
	5.2	<b>Domestic &amp; Family Violence Workshop</b>	Review gaps and how Logan Together can value add		Workshop	Discussion and planning	Discussion and planning				
	5.3	<b>New Youth Employment Initiatives in Logan</b>	Briefing by yourtown		Update						

# LOGAN TOGETHER INTEGRATED GOVERNANCE MEETING AGENDA

## SECRETARIATS:

Jen Kyriacou (e) [j.kyriacou@griffith.edu.au](mailto:j.kyriacou@griffith.edu.au) (ph) 3382 1163 Logan Together Leadership Table

Ellen Ferris (e) [ellenferris456@bigpond.com](mailto:ellenferris456@bigpond.com) Logan Together Action Group

LT Backbone Team Project Administrative Support (e) [s.jankovic@griffith.edu.au](mailto:s.jankovic@griffith.edu.au) and [samantha.pearson@griffith.edu.au](mailto:samantha.pearson@griffith.edu.au)



## JOINT MEETING: LEADERSHIP TABLE/ACTION GROUP

### MEMBERSHIP: LEADERSHIP TABLE

Margaret Allison	Co-Chair	<a href="mailto:margaret.allison4@gmail.com">margaret.allison4@gmail.com</a>
John Davis	Co-Chair	<a href="mailto:john.davis@strongersmarter.com.au">john.davis@strongersmarter.com.au</a>
Allison McClean	Waterford West State School	<a href="mailto:Amccl10@eq.edu.au">Amccl10@eq.edu.au</a>
Amanda Currie	Dept. of Child Safety, Youth and Women	<a href="mailto:amanda.currie@communities.qld.gov.au">amanda.currie@communities.qld.gov.au</a>
Andrea World	Community Representative	<a href="mailto:worldy@bigpond.net.au">worldy@bigpond.net.au</a>
Angela TuiSamoa	Community Representative	<a href="mailto:angelange72@hotmail.com">angelange72@hotmail.com</a>
Cath Bartolo	YFS	<a href="mailto:cathb@yfs.org.au">cathb@yfs.org.au</a>
Bev Book / Felicia Dingle	The Benevolent Society	<a href="mailto:Bev.Book@ndis.gov.au">Bev.Book@ndis.gov.au</a> <a href="mailto:Felicia.Dingle@benevolent.org.au">Felicia.Dingle@benevolent.org.au</a>
Craig Kennedy	Child and Youth Community Health Services	<a href="mailto:craig.kennedy2@health.qld.gov.au">craig.kennedy2@health.qld.gov.au</a>
David Crompton	Addiction and Mental Health	<a href="mailto:David.crompton@health.qld.gov.au">David.crompton@health.qld.gov.au</a>
Debbie Miscamble	The Salvation Army / Communities for Children	<a href="mailto:debbie.miscamble@aue.salvationarmy.org">debbie.miscamble@aue.salvationarmy.org</a>
Aunty Faith Green	Community Representative	<a href="mailto:fgreen1965@gmail.com">fgreen1965@gmail.com</a>
Geoff Woolcock	Logan Child Friendly Community Limited	<a href="mailto:Geoffrey.Woolcock@usq.edu.au">Geoffrey.Woolcock@usq.edu.au</a>
Jacinta Powell	Logan Hospital	<a href="mailto:Jacinta.powell@health.qld.gov.au">Jacinta.powell@health.qld.gov.au</a>
Jody Taylor-Robinson	Dept. of Human Services	<a href="mailto:Jody.Taylor-Robinson@humanservices.gov.au">Jody.Taylor-Robinson@humanservices.gov.au</a>
John Norfolk	Dept. of Education	<a href="mailto:john.norfolk@qed.qld.gov.au">john.norfolk@qed.qld.gov.au</a>
Josephine Aufai	Community Representative	<a href="mailto:aufaijo@gmail.com">aufaijo@gmail.com</a>
Karen Dawson Sinclair	Community Representative	<a href="mailto:k.dawsonsinclair@griffith.edu.au">k.dawsonsinclair@griffith.edu.au</a>
Kim Wright	Kingston East Neighbourhood Group	<a href="mailto:manager@keng.org.au">manager@keng.org.au</a>
Linda O'Brien	Griffith University	<a href="mailto:linda.obrien@griffith.edu.au">linda.obrien@griffith.edu.au</a>
Lisa Ward	Access	<a href="mailto:LisaW@acsl.org.au">LisaW@acsl.org.au</a>
Louise Litchfield	Brisbane South PHN	<a href="mailto:llitchfield@bsphn.org.au">llitchfield@bsphn.org.au</a>
Mary Anne Collier	Yourtown	<a href="mailto:mcollier@yourtown.com.au">mcollier@yourtown.com.au</a>
Matthew Cox	Logan Together	<a href="mailto:matthew.cox@griffith.edu.au">matthew.cox@griffith.edu.au</a>
Michael Jacobs	Community Representative	<a href="mailto:admin@keng.org.au">admin@keng.org.au</a>
Melanie Houghton	UnitingCare	<a href="mailto:Melanie.Houghton@uccommunity.org.au">Melanie.Houghton@uccommunity.org.au</a>
Nick McGuire	Logan City Council	<a href="mailto:nickmcguire@logan.qld.gov.au">nickmcguire@logan.qld.gov.au</a>
Nicola Cooke	Anglicare Southern Queensland	<a href="mailto:NCooke@anglicaresq.org.au">NCooke@anglicaresq.org.au</a>
Phillip Rankine	Department of Social Services	<a href="mailto:phillip.rankine@dss.gov.au">phillip.rankine@dss.gov.au</a>
Roger Marshall	Logan East Community Neighbourhood Assoc.	<a href="mailto:rogermarshall@bigpond.com">rogermarshall@bigpond.com</a>

# LOGAN TOGETHER INTEGRATED GOVERNANCE MEETING AGENDA

## SECRETARIATS:

Jen Kyriacou (e) [j.kyriacou@griffith.edu.au](mailto:j.kyriacou@griffith.edu.au) (ph) 3382 1163 Logan Together Leadership Table

Ellen Ferris (e) [ellenferris456@bigpond.com](mailto:ellenferris456@bigpond.com) Logan Together Action Group

LT Backbone Team Project Administrative Support (e) [s.jankovic@griffith.edu.au](mailto:s.jankovic@griffith.edu.au) and [samantha.pearson@griffith.edu.au](mailto:samantha.pearson@griffith.edu.au)



## JOINT MEETING: LEADERSHIP TABLE/ACTION GROUP

First Name	Last Name	Organisation	Organisation Role	Group Role	Work Email Address
Grainne	Taia	Access Community Services Limited	Community HUB Coordinator	primary	grainnet@acsl.org.au
Wendy	Kastelein	Child Health Logan Central	Nurse Unit Manager	primary	Wendy.Kastelein@health.qld.gov.au
Colleen	Hickey	Child Health Beenleigh & Logan	Clinical Nurse Consultant	proxy	CHS-CNC-C4@health.qld.gov.au
Tariro	Kajese	Churches of Christ Care	Fostering Case Worker	primary	tariro.kajese@cofcqld.com.au
Cassandra	Biddick	Department of Child Safety, Youth and Women	Principal Community Services Officer	primary	Cassandra.Biddick@csyw.qld.gov.au
Rebecca	Maurer	Department of Child Safety, Youth and Women	Integration Manager (Domestic & Family Violence)	primary	Rebecca.Maurer@csyw.qld.gov.au
Susan	Cary	Department of Education	Partnerships and Innovation Officer	primary	Susan.CARY@qed.qld.gov.au
Tania	Collins-McCoy	Department of Social Services	Fund Agreement Manager	primary	taniamccoy@dss.gov.au
Kerry	Smith	Griffith Uni & We Belong Family Day Care	Lecturer & Approved Provider	primary	kerry.smith@griffith.edu.au
Faith	Green	Gunya Meta	Manager, Mob Kinnectors	primary	faithg@mobkinnectors.com.au
Noel	Summers	Gunya Meta	Board Member	primary	maibinyana41@yahoo.com
Kim	Wright	K.E.N.G (Kingston East Neighborhood Group Inc.)	KENG Partnership Coordinator	primary	manager@keng.org.au
Stephanie	Crick	Kingston State School	Principal	primary	scric1@eq.edu.au
Jo	Bird	Kingston State School	Guidance Officer	proxy	jbird9@eq.edu.au
Maddison	Watson	Logan City Council	Community Development Officer	primary	MaddisonWatson@logan.qld.gov.au
Matthew	Cox	Logan Together	Director	primary	matthew.cox@griffith.edu.au
Angela	TuiSamoa	Logan Together- Leadership Table	Parent Representative	primary	a.tuisamoaa@griffith.edu.au
Michael	Jacobs	Logan Together- Leadership Table	Parent Representative	primary	michael.jacobs@keng.org.au
Logan	Together	Logan Together	General contact		logantogogether@griffith.edu.au
Jen	Kyriacou	Logan Together	Exec Support Officer	primary	j.kyriacou@griffith.edu.au
Sue	Jankovic	Logan Together	Deputy Director	primary	s.jankovic@griffith.edu.au
Samantha	Pearson	Logan Together	Projects Coordinator	primary	samantha.pearson@griffith.edu.au
TBA		Logan Together	Community Engagement Coordinator	primary	
Victoria	Parker	Logan Together	Communications Lead	primary	v.parker@griffith.edu.au
Sharon	Worboys	Logan Together	Communications Specialist	primary	sharon.worboys@griffith.edu.au
Ties	Warta	Mercy Community Services	LLA Facilitator	primary	Ties.Warta@mercy.org.au
Carrie	Rose	Rosies Early Learning	Owner & Pedagogical leader	primary	carrie_rose@icloud.com
Natalie	Harvey	SYC-ParentsNext	Team Leader	primary	nharvey@syc.net.au
Finn	Murphy	The Benevolent Society	Community Development Worker	primary	finn.murphy@benevolent.org.au
Marisa	Phillips	The Benevolent Society	Manager Early Years Place	primary	marisa.phillips@benevolent.org.au
Tracy	Cook	The Benevolent Society	Community Development Worker	proxy	Tracy.Cook@benevolent.org.au
Debbie	Miscamble	The Salvation Army	Communities Program Manager	primary	debbie.miscamble@aus.salvationarmy.org

# LOGAN TOGETHER INTEGRATED GOVERNANCE MEETING AGENDA

## SECRETARIATS:

Jen Kyriacou (e) [j.kyriacou@griffith.edu.au](mailto:j.kyriacou@griffith.edu.au) (ph) 3382 1163 Logan Together Leadership Table

Ellen Ferris (e) [ellenferris456@bigpond.com](mailto:ellenferris456@bigpond.com) Logan Together Action Group

LT Backbone Team Project Administrative Support (e) [s.jankovic@griffith.edu.au](mailto:s.jankovic@griffith.edu.au) and [samantha.pearson@griffith.edu.au](mailto:samantha.pearson@griffith.edu.au)



## JOINT MEETING: LEADERSHIP TABLE/ACTION GROUP

Penny	Goodall	The Salvation Army	Community Development Worker	primary	penny.goodall@aue.salvationarmy.org
Sheena	Callaghan	True Relationships and Productive Health	Program Coordinator – Gold Coast Region	primary	Sheena.Callaghan@true.org.au
Jody	Willoughby	UnitingCare Queensland - Intensive Support	Local Service Manager Logan	primary	jody.willoughby@uccommunity.org.au
Norma	Williams	Uniting Care Queensland - Family Relationship Centre	Local Services Manager - Family Law Services	primary	Norma.Williams@uccommunity.org.au
Sami	Paul	UnitingCare Queensland	Community Development Worker	primary	samantha.paul@uccommunity.org.au
Donna	Hanson	Wesley Mission Queensland	Community Support Worker	primary	d.hanson@wmq.org.au
Diana	Townsend	YFS	Families Manager	primary	dianat@yfs.org.au
Christine	Grose	YFS	Manager Sure Steps project	proxy	christineg@yfs.org.au
Yolanda	van Gellecum		Parent	primary	y.vangellecum@outlook.com
Ellen	Ferris		Volunteer	primary	ellenferris456@bigpond.com

**LOGAN TOGETHER INTEGRATED GOVERNANCE - LIVE REGISTER**

Aug-19 V2.1



Roadmap Ref	Roadmap Priority	Project Progress	Project Phase	Item	Lead	Partner Organisation	Date Opened	Date Due	Date Closed	Status
<i>Roadmap Ref</i>	<i>Priority</i>	<i>Status</i>	<i>Project Phase</i>	<i>Item Name</i>	<i>Lead Partner</i>				<i>When was the action closed</i>	<i>Select from drop down menu</i>
Good Start in Life	Boosting Access to Care for Parents and Babies	On Track	Implementation & Review	<b>Community Maternity and Child Health Hubs</b>	PHN/Matthew Cox	PHN/LTBB Team				Open
Good Start in Life	Healthy habits during and after birth (Roadmap Priority 1-5)	On Track	Implementation & Review	<b>Right @ Home</b>	Belinda Brown/Wendy Kastelein	Children's Health Queensland				Open
Good Start in Life	Healthy habits during & after birth (Roadmap Priority 1-5)	On Track	Assess and Plan	<b>Backing Young Parents</b>	Under review	Communities for Children				Open
On Track at 3 Years	Reading, talking and singing	On Track	Implementation & Review	<b>Logan's Little Learners</b>	Marnie Julin	First Five Forever				Open
On Track at 5 years	Successful transitioning to school	On Track		<b>Kindy to Prep Program</b>	Belinda Brown	Logan Together Backbone Team				Open
On Track at 5 years	Attending a quality Kindergarten Program	On Track	Implementation & Review	Kindy Conversations	Penny Goodall	CFC				
On Track at 5 years	Attending a quality kindergarden program	On Track	Assess and Plan	Kindy Communication Activities	Victoria Parker	Logan Together Backbone Team				Open
On Track at 5 years	Attending a quality kindergarden program	On Track	Implementation & Review	Kindy Scholarships	Belinda Brown	Logan Together Backbone Team				Open
On Track at 5 years	Attending a quality kindergarden program	On Track	Assess and Plan	Other Barriers to Kindy Participation	Belinda Brown	Logan Together Backbone Team				Open
On Track at 5 years	Attending a quality kindergarden program	On Track	Assess and Plan	Kindy Programs - Bespoke Options:						Open
On Track at 5 years	Attending a quality kindergarden program	On Track	Assess and Plan	- Specialist Kindy Projects Under Development	Belinda Brown	Logan Together Backbone Team				Open
On Track at 5 years	Attending a quality kindergarden program	On Track	Assess and Plan	- Samoan Kindy (Aoga Amata)	Naomi Pelite	Village Connect				Open
On Track at 5 years	Attending a quality kindergarden program	On Track	Implementation & Review	- Burregah Kindy		ATSICHS/C&K				Open
On Track at 5 years	Attending a quality Kindergarten Program	On Track	Implementation & Review	- RASEC Pilot (Refugees & Asylum Seekers)	Sahba Hamid	Access				Open
On Track at 5 years	Successful transitioning to school	On Track	Assess and Plan	Positive Start to School Initiatives	Belinda Brown	Logan Together Backbone Team				Open
On Track at 5 years	Successful transitioning to school	On Track	Assess and Plan	Enrol to Prep Campaign	Victoria Parker	Logan Together Backbone Team				Open
Family Foundations	Parents feel knowledgeable and confident	On Track	Assess and Plan	<b>Stronger Parenting Campaign</b>	Victoria Parker	Logan Together Backbone Team				Open
Family Foundations	Social emotional wellbeing for all the Family	On Track	Implementation & Review	<b>Mums &amp; Bubs Facebook</b>	Nat Millar	Logan Together Backbone Team				Open
Strong Community	Social Connection Healthy & Physically Active (OT8)	On Track	Assess and Plan	<b>Sport 4 Development</b>	To be assigned	Logan Together Backbone Team				Open
Strong Community	An Empowered Community	On Track	Implementation & Review	<b>Logan Child Friendly City - Children's Charter and Toolkit Project</b>	Carrie Rose	Rosie's Early Centre				Open
Strong Community	An Empowered Community	Off Track	Implementation & Review	<b>NDIS Activation</b>	To be assigned	Benevolent Society/Cares QLD				Open
Strong Community	Social Connection and Empowered Community	On Track	Implementation & Review	<b>Changefest/National Network</b>	John Anderson/Vic Parker	Logan Together Backbone Team				Open
Strong Community	Social Connection and Empowered Community	On Track	Assess and Plan	<b>CFC Evidence Based Programs</b>	Deb Miscamble/Sue Jankovic	Logan Together Backbone Team/CfC/ Gunya Meta/Beenleigh Housing	1/07/2019	30/06/2020		Open
Strong Community	Social Connection and Empowered Community	On Track	Assess and Plan	Logan Rivers Community Connections	Courtney Gillett					
Strong Community	Social Connection and Empowered Community	On Track	Assess and Plan	Beenleigh Housing Service Delivery	Will Davis					
Strong Community	Social Connection and Empowered Community	On Track	Assess and Plan	Gunya Meta Service Delivery	Aunty Faith Green					
Effective Systems	Social Investment Reform	On Track	Assess and Plan	<b>Logan Investment Reform</b>	Matthew Cox	YFS, Uniting Care, CSIA	28/06/2019	3/12/2019		Open
Effective Systems	Child development workforce strategies	On Track	Implementation & Review	<b>Domestic &amp; Family Violence School Workforce Development Project</b>	Rebecca Maurer	Domestic and Family Violence - South East Region				Open
Effective Systems	Child development workforce strategies	On Track	Assess and Plan	<b>Early Childhood Workforce Development Initiative</b>	Belinda Brown	Logan Together Backbone Team				Open
Effective Systems	Social Investment Reform	On Track	Implementation & Review	<b>Community Gateways</b>	Sue Jankovic/Jon Eastgate	Logan Together Backbone Team				Open
Effective Systems	Social Investment Reform	On Track	Assess and Plan	<b>Sure Steps family Coaching</b>	Christine Grose	YFS				Open
Effective Systems	Multi-agency Service Integration	On Track		<b>Transdisciplinary Support (Health Pathways)</b>	Matthew Cox	Logan Together Backbone Team				Open
Effective Systems	Multi-agency Service Integration	On Track	Implementation & Review	TOTs Project	Tracey Button/Phillipa Calabro	PHN South Brisbane				Open



# Collaboration arrangements

## The role of the Logan Child Friendly Community Ltd Board

# Our work so far ....



## Role of Leadership Table

- Confirmed purpose, format, routines
- Criteria for membership
- Membership refresh

## Role of Logan Together Action Group

- Killed old Chapter structure
- Refocussed purpose, confirmed membership, confirmed relationship with Leadership Table
- New name !

## Warril Yari Go and other community leadership groups

- Groups maturing
- Processes maturing

## Government partnering process

- Underway

## Developed integrated Governance map

**TODAY: The relationship with Logan Child Friendly Community Ltd Board**

# LOGAN TOGETHER COLLABORATION MODEL



**Ensuring community voice and leadership**

- ~ Leadership within the community
- ~ Engagement and co-design – two way information flow
- ~ Direction setting and prioritisation
- ~ Collaboration on Projects

**Providing strategic leadership and setting culture**

- ~ Enabling change
- ~ Collaboration and accountability
- ~ Agenda setting, planning and prioritising
- ~ Two way connection with Logan and Logan people
- ~ Creativity, energy and collective momentum

**Enabling reform of policy, service procurement and direct service delivery**

- ~ Resourcing
- ~ Data and insights
- ~ Skills and capability



**LCFC Ltd Board**

- ~ Safeguards mission and values
- ~ Legal and financial accountability
- ~ Select and oversight CEO
- ~ Support Backbone to achieve its role
- ~ Strategic planning



**Serving as an important operational coordination and collaboration mechanism Logan Together Action Group ...**

- ~ Will inform and be informed by the Logan Together Leadership Table
- ~ Assist and support the establishment and oversight of project working groups
- ~ Commit cultural and systemic change
- ~ Drive the shared Logan Together and “Supporting Families, Changing Futures” child protection reform agenda and its associated governance structure.

The **Local Level Alliance (LLA)** is a multi-agency network of community service providers established as part of the Family and Child Connect (FaCC) Initiative. The main purpose of these LLA's is to improve local access to high quality services for families to help them safely care for their children.

The **Browns Plains LLA** has a strong place-based focus on the western suburbs of Logan City. It identifies priority issues for local families and organises responses to those issues.

**Communities for Children (CFC)** supports integrated and prevention based responses to improve child wellbeing and development, safety and family functioning; and to help build stronger, more resilient families and communities. C4C decisions are made by a broadly based committee.

A **case conferencing forum** to improve access to appropriate and timely support for vulnerable families and ensures families are actively engaged in, and given the opportunity to lead the process of determining appropriate supports. It also collects and communicates information about significant barriers to, and gaps in, the provision.

The Backbone Team's role is to serve partners across the Movement and support collaboration through these structures. Maintaining the shared agenda and communicating progress are important. The Board of Logan Child Friendly Community Ltd is the employer of the Backbone Team and has legal and financial responsibilities. The Board is responsible to Funders for mission delivery and connects with the Leadership Table to safeguard the mission and values of the Movement.

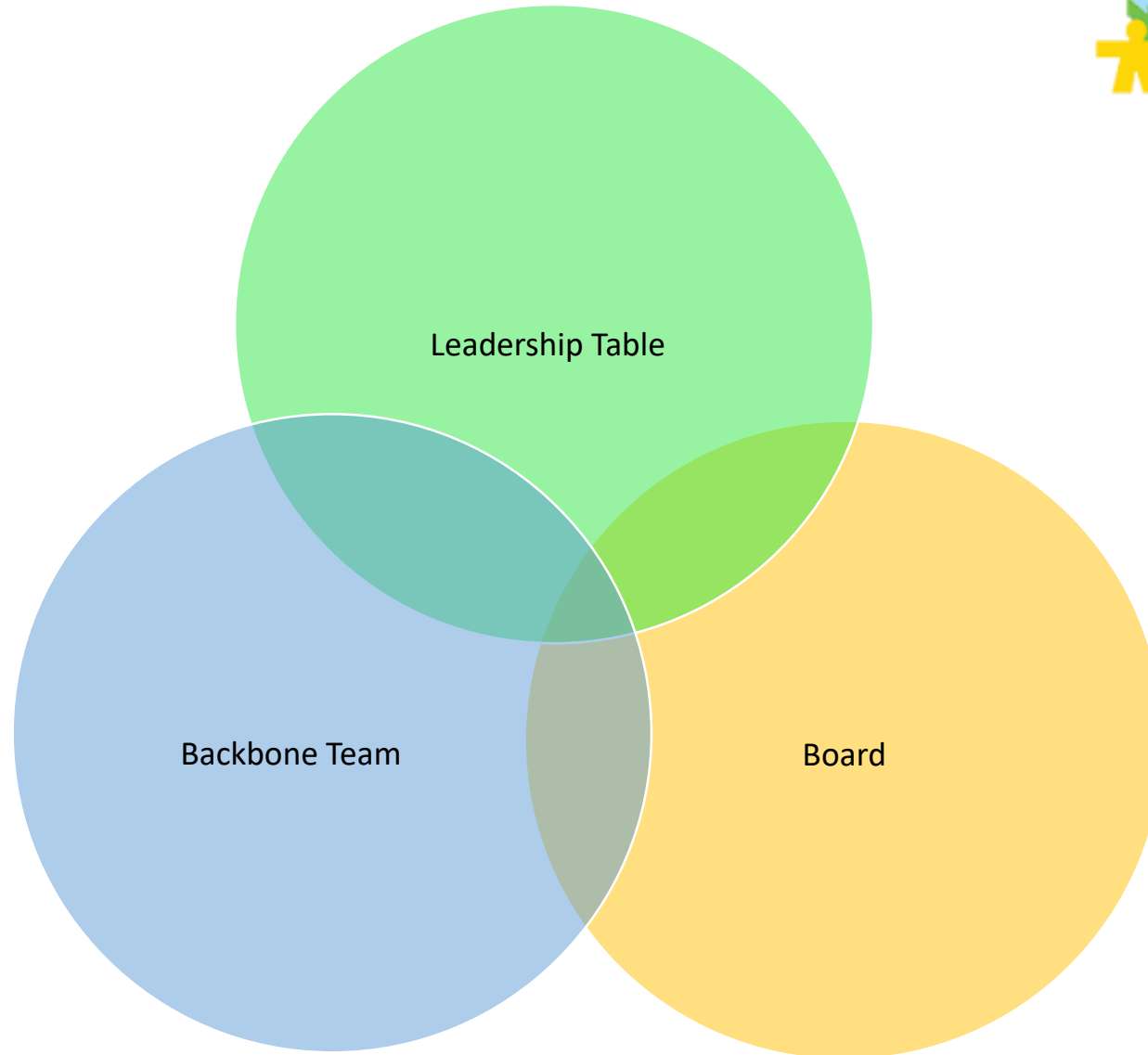






The Leadership Table  
and  
the Board of Logan Child  
Friendly Community Ltd

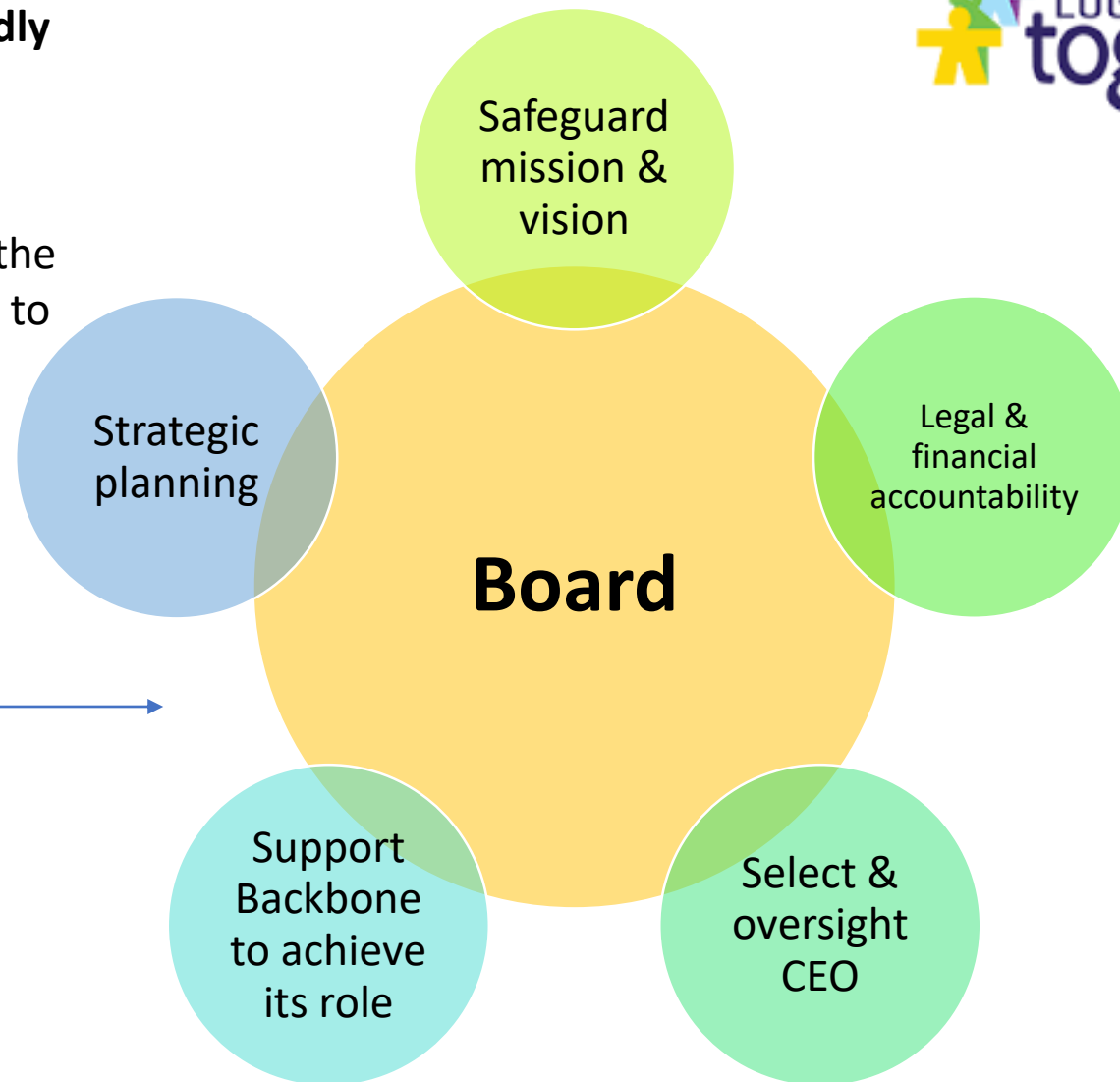
# Relationship between Leadership Table and Board of LCFC Ltd



## What is the Board of Logan Child Friendly Community Ltd ?

A new company established to employ the Backbone team and work with partners to deliver Logan Together

- Receive and manage funding
- Employ backbone team
- Take on legal and financial accountability
- Key roles →



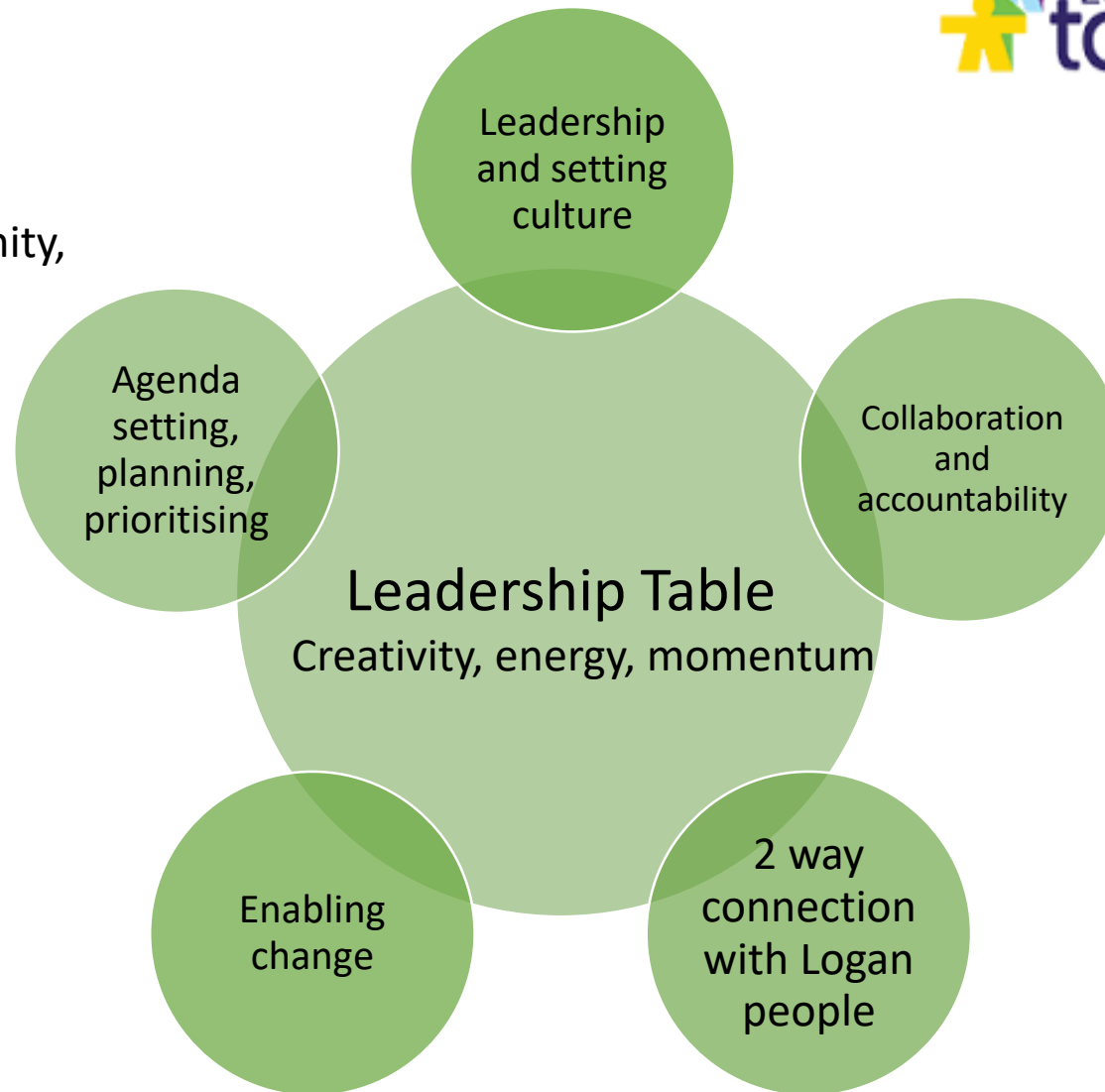
## Peak collaborative body for Logan Together movement

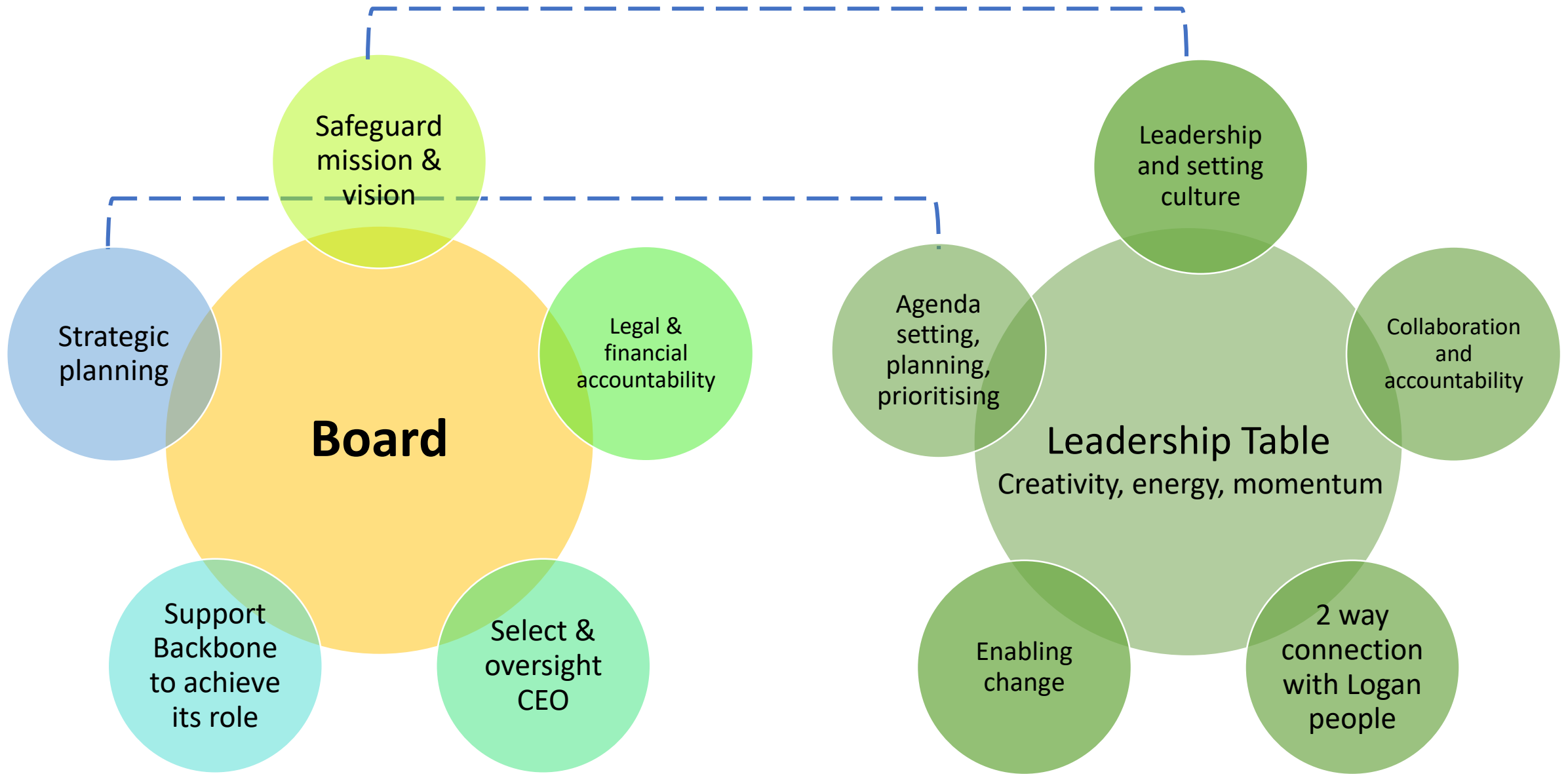
Brings together partners from community, sector, Government and business.

- Key roles →

But

- No funding
- No staff
- No liability







Board – <i>formal accountability</i>	Leadership Table - <i>collaboration</i>
<p data-bbox="206 304 555 347">Strategic planning</p> <ul data-bbox="206 382 996 675" style="list-style-type: none"> <li>• Ensures appropriate functioning of Leadership Table in its agenda setting task</li> <li>• Ensures Backbone fit for purpose and resourced to deliver Roadmap</li> <li>• Oversees Backbone Operational Plan</li> <li>• Plans ahead to ensure Roadmap and the Movement can be delivered.</li> </ul>	<p data-bbox="1049 304 1773 347">Agenda setting, planning, prioritising</p> <ul data-bbox="1049 382 1847 725" style="list-style-type: none"> <li>• Develops Roadmap</li> <li>• Agrees priorities for collaboration</li> <li>• Brings opportunities to table</li> <li>• Taps networks to make things happen</li> <li>• Planning and strategy (shared with Backbone Team and Board)</li> <li>• Identifying and reducing duplications / targeting effort / filling gaps</li> </ul>
<p data-bbox="206 875 825 918">Safeguarding mission and vision</p> <ul data-bbox="206 953 894 1118" style="list-style-type: none"> <li>• Is ultimately responsible for fostering the Movement ... is funded to do so</li> <li>• Ensuring the structures, processes, ethos, purpose is maintained</li> </ul>	<p data-bbox="1049 875 1643 918">Leadership and setting culture</p> <ul data-bbox="1049 953 1791 1203" style="list-style-type: none"> <li>• Translating the ChangeFest statement</li> <li>• Maintain focus on Logan Together objectives</li> <li>• Holding the way of working together</li> <li>• Building a culture within own organisations: committing to change within organisations</li> <li>• Being creative</li> </ul>



## **Proposed relationship between the Board and the Leadership Table .....**

A skills-based board of 7.

- Two (2) member appointed
- Four (4) skills based board appointments
- One (1) of the two co-chairs of the Leadership Table (rotating)

Membership – The “shareholders”

- Individuals or organisations
- Membership approved or otherwise by current members
- Membership criteria TBC
- Membership fees ?

Current members:

- Geoff Woolcock
- Margaret Allison
- Lesley Chenoweth
- Cath Bartolo
- Brit Ibanez